



**THE NIGHT  
MINISTRY**<sup>®</sup>

**FY 18 ANNUAL REPORT**

4711 N RAVENSWOOD AVE, CHICAGO, IL 60640

[www.thenightministry.org](http://www.thenightministry.org) Phone: 773-784-9000 Fax: 773-784-5865



**The Night Ministry** is a Chicago-based organization that works to provide housing, health care, and human connection to members of our community struggling with poverty or homelessness.

# DEAR FRIENDS,



On behalf of the Board of Directors and staff of The Night Ministry, we are proud to share The Night Ministry's FY18 Annual Report with you. We gratefully acknowledge your support as a valued partner in our mission.

The Night Ministry is honored to provide housing, health care, and human connection to individuals and families experiencing homelessness, poverty, or loneliness. Those whom we serve are often forgotten by the rest of society, kicked out by their families, and ignored as thousands walk by them every day. However, by reaching out to these individuals most in need, The Night Ministry lets them know that they are not forgotten, that we care for and accept them without question or concern for their past. Our housing, medical, and outreach services are low-threshold in nature, for we believe that no one should have

**“The Night Ministry’s five Youth Housing Programs and our Outreach and Health Ministry Program could never be as effective as they are without the support of friends and benefactors, like you.”**

to climb over barriers in order to receive services.

The Night Ministry's five Youth Housing Programs and our Outreach and Health Ministry Program could never be as effective as they are without the support of friends and benefactors, like you. With your help, last year alone The Night Ministry served over 5,600 individuals. Across our five shelter programs, we housed 455 homeless young people and 47 infants and toddlers. Our Outreach and Health Ministry Program made 51,272 outreach contacts with youth and adults seeking services and provided 1,761 free health assessments. Our volunteers logged over 29,000 hours and served 82,990 meals at our programs. Our Associate Board acted as ambassadors of our mission across Chicago, and our Board of Directors helped The Night Ministry strategically plan for the future.

The Night Ministry is known as a catalyst for change. Every day, the services we provide to homeless and precariously housed youth and adults result in dramatic changes in their lives: stability where there once was none, housing when a life spent on the streets was once the only option imaginable, improved

health when untreated illness was once debilitating, a sense of self-worth when rejection and ejection were common reactions from others. As a supporter of The Night Ministry, you help to initiate and to sustain such change in those whom we serve daily. The year ahead will be marked by exciting changes for our organization, as we continue to pursue the goals of *Serving in the Next Decade*, The Night Ministry's current strategic plan, and improve our facilities to allow us to better serve our clients and to operate more efficiently.

We sincerely hope that, as a friend and partner of The Night Ministry, you will celebrate the successes and highlights detailed in this report and remain close to our mission as we journey towards an even more exciting future.

With sincere appreciation,



**Paul W. Hamann**  
President & CEO



**Alicia Pond**  
2018 Board Chair

# FY 18 BOARD OF DIRECTORS

(JULY 1, 2017 – JUNE 30, 2018)

## OFFICERS:

Alicia Pond,  
*Chair*

Mark Warren,  
*Vice Chair*

Kiantae A. Bowles,  
*Secretary*

Jim King,  
*Treasurer*

## DIRECTORS:

Gordon Addington

Barbara Baran

Dave Berger

Rev. Shawna Bowman

Robert A. Carson

Brian D. Fergemann

William A. Goldstein

Carol Hogan

Ike Hong

Suzanne Hoyes

Norman Jeddelloh

Terrence McMahon

Don J. Mizerk

Max Nutkowitz

Dave Ortman

Ellen Romberg

Allan J. Ruter

Sean T. Taylor

Dennis W. Thorn

Libby Angst,  
*FY 18 Kellogg  
Board Fellow*

## DIRECTORS EMERITI:

Rev. Thomas Behrens,  
*Founding President &  
Former CEO*

Chester A. Gougis

Robert H. Jordan, Jr.

Richard Pigott

Carl W. Warschausky

## EXECUTIVE TEAM:

Paul W. Hamann,  
*President & CEO*

Erin Ryan,  
*Senior Vice President*

Barbara Bolsen,  
*Vice President of Strategic  
Partnerships & Community  
Engagement*

Christy Prassas,  
*Vice President of  
Development & External  
Relations*

# FY 18 FINANCIALS

(JULY 1, 2017 – JUNE 30, 2018)

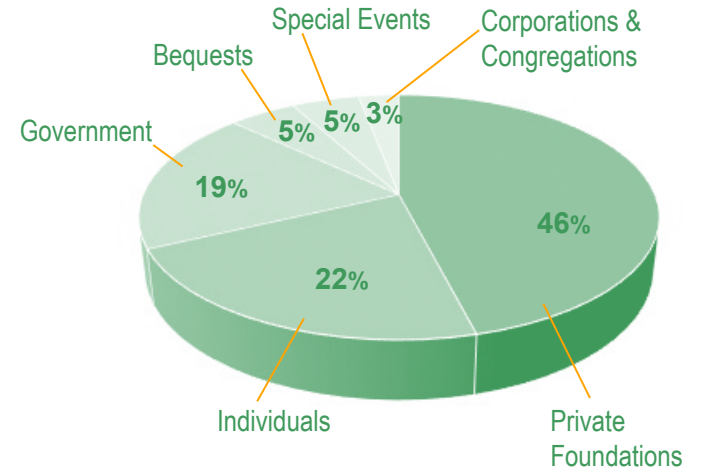
## REVENUE

Grants & Contracts	
Government	\$ 1,610,008
Private Foundations	3,816,901
Corporations & Congregations	254,805
<b>Total Grants &amp; Contracts</b>	<b>5,681,715</b>
Individuals	1,886,413
Bequests	406,811
Special Events	397,676
Other (Including Interest)	206,358
<b>TOTAL OPERATING REVENUE</b>	<b>\$ 8,578,973</b>

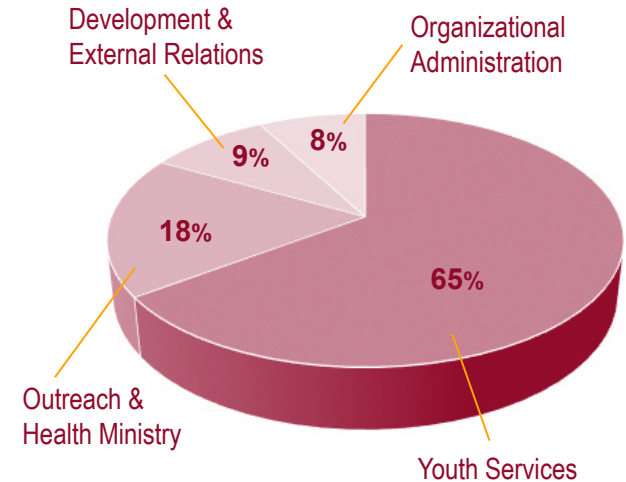
## EXPENSES BY FUNCTIONAL AREA

Outreach & Health Ministry	
<b>Total for Outreach &amp; Health Ministry</b>	<b>\$ 1,326,474</b>
Youth Services	
Open Door Shelter - West Town	
Transitional Living Program (8 beds, 2-years)	638,955
Interim Youth Shelter (16 beds, 120-days)	1,324,710
<b>Total for Open Door Shelter - West Town</b>	<b>1,963,666</b>
Youth Outreach	375,304
Open Door Shelter - Lakeview: RAPP Program	977,084
Overnight Shelter-The Crib	675,213
Transitional Living Program - Phoenix Hall (North Lawndale)	430,723
Youth Supportive Services	471,059
<b>Total for Youth Services</b>	<b>4,893,050</b>
Development & External Relations	792,853
Organizational Administration	663,855
<b>TOTAL OPERATING EXPENSES BY FUNCTIONAL AREA</b>	<b>\$ 7,676,232</b>
<b>OPERATING SURPLUS (DEFICIT) *</b>	<b>\$ 902,741</b>
<b>DEPRECIATION</b>	<b>\$ 226,052</b>
<b>TOTAL SURPLUS</b>	<b>\$ 676,689</b>

## SOURCES OF INCOME



## USE OF FUNDS



*\*Based on the 2018 audited financial statements.*

On a given night in 2018, the City of Chicago identified 5,549 individuals living in shelters, on the streets, or in environments not meant for habitation. In FY2018, The Night Ministry served 5,679 individuals experiencing homelessness or poverty across the city.



# IMPACT HIGHLIGHTS

## HOUSING



- Across **five** shelter programs, The Night Ministry housed **455 homeless young people** and **47** of their children.
- **1/3** of homeless young women in Cook County are pregnant or parenting. The Response-Ability Pregnant and Parenting Program (RAPPP) provided **2,671 shelter bed nights** to young moms and their children.
- **Seven in ten** homeless youth experience a mental health challenge. **72% of residents** in the Interim Housing Program received mental health services.

## HEALTH CARE



- The Outreach and Health Ministry Program made **51,272 outreach contacts** and provided **1,761 free health assessments**.
- Nurse Practitioners and Volunteer Physicians **prevented 356 visits** to the emergency room, saving the public health system nearly **\$328,600 in ER costs**.
- **498 individuals** at risk for HIV transmission learned their HIV status with a Rapid HIV test.

## HUMAN CONNECTION



- Volunteers logged over **29,000 hours** at The Night Ministry and served **82,990 meals** to the homeless and hungry at our programs.
- **78% of Health Outreach Bus clients** feel accepted at the Bus.
- **87% of residents** in the STEPS Transitional Living Program feel supported by the staff.

**Sources:** City of Chicago 2018 Homeless Point-in-Time Count & Survey Report; Chapin Hall at the University of Chicago, *Youth Homelessness in Cook County, Illinois*, and *Missed Opportunities: Youth Homelessness in America*; The Night Ministry FY18 Departmental Dashboards, 2017-18 Resident Youth Survey, and 2018 Outreach and Health Ministry Street Survey.

1

## FORMER CLIENT SHARES HIS STORY AT ANNUAL BENEFIT

Darrick S. had a successful career as a photojournalist and small business owner, but lost everything in the wake of his mother's prolonged illness and his own unexpected health challenges. With the support of staff at the Health Outreach Bus, Darrick moved from homelessness into a more stable situation with his own apartment. In June of 2018, Darrick spoke to supporters of The Night Ministry at the Lighting Up the Night Awards Dinner & Auction, sharing his story to illustrate how just a few snips in the safety net can cause catastrophic disruptions in anyone's life.

To read Darrick's speech from Lighting Up the Night, visit [www.thenightministry.org/blog/darrick](http://www.thenightministry.org/blog/darrick)

“ I am so grateful for The Night Ministry for being that helping hand that was there when no one, not even my family, was extending theirs.”

~ Darrick S.



To learn more about Street Medicine watch this video:  
[bit.ly/2GzAVcT](https://bit.ly/2GzAVcT)

# 2

## STREET MEDICINE GROWS FROM PILOT TO PERMANENT PROGRAM

Launched as a pilot project in 2015, Street Medicine became a permanent part of The Night Ministry's Outreach and Health Ministry Program in 2018, and has allowed The Night Ministry to reach more deeply into the neighborhoods the organization serves. Street Medicine deploys a Nurse Practitioner, a Case Manager, and an Outreach Worker into encampments, under viaducts, and onto street corners across Chicago to provide triage and non-emergency medical treatment. Since the program is mobile, the Street Medicine Team can easily follow those individuals with whom they have developed relationships and discover new communities in need. Since becoming a permanent program, Street Medicine has been able to increase the amount of time Team members spend on the street responding to the critical needs of homeless populations who have the most difficulty accessing traditional services.



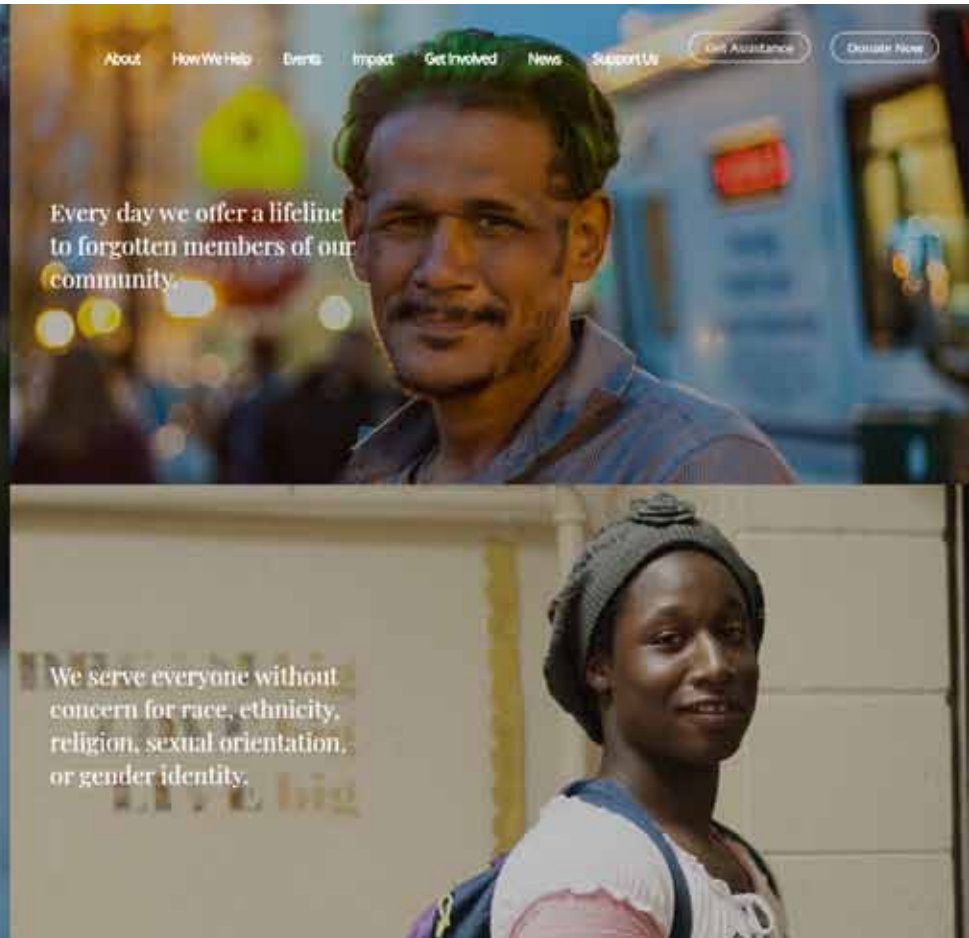


# 3

## THE NIGHT MINISTRY UNVEILS NEW WEBSITE

The Night Ministry's website underwent a major overhaul this past year, supported by the generosity of the Julius N. Frankel Foundation. The redesign process began with interviews of members of The Night Ministry community to learn about ways they interact with the agency's website and to ask about changes they would recommend to its web presence. A website committee then worked closely with developers from a Chicago digital agency, Monday Loves You, to design a new site that showcases the mission of the organization while taking advantage of new web technology. Members of our Board of Directors, staff, volunteers, and clients provided feedback before the new site officially launched in February of 2018.

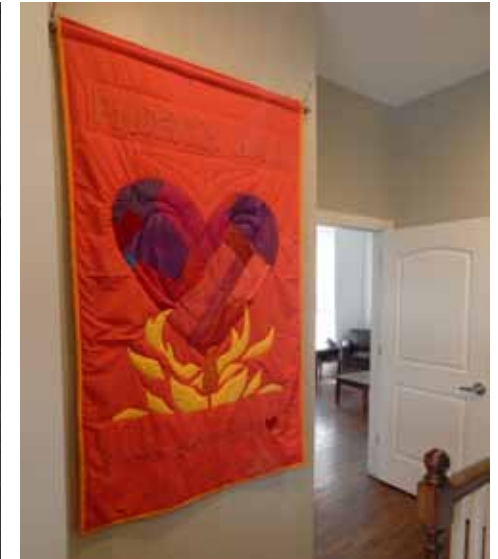
Visit our new website at [www.thenightministry.org](http://www.thenightministry.org)



# 4

## NEW YOUTH HOUSING PROGRAM IS A FIRST OF ITS KIND

Homelessness greatly impacts a young person's ability to stay in school and earn a diploma. Research indicates that students experiencing homelessness are 87% more likely to drop out of school than their stably housed peers. In Chicago Public Schools, nearly 5 percent of students experience homelessness or housing instability a year. In response, The Night Ministry opened Phoenix Hall, a residence for homeless students in August of 2017, just in time for the new school year. Serving up to eight students at a time, Phoenix Hall is a collaborative effort among The Night Ministry and several organizations, including North Lawndale College Prep High School and Old St. Patrick's Church. Located on Chicago's West Side, the program assists residents in the achievement of their academic goals by providing stable housing and offering supportive services in the residence, in school, and in the community.



Find a link to an article about Phoenix Hall written by Erin Ryan, The Night Ministry's Senior Vice President, for *Social Innovations Journal* at [www.thenightministry.org/blog/phoenix-hall](http://www.thenightministry.org/blog/phoenix-hall)

# 5

## FORMER CLIENT SERVED AS THE NIGHT MINISTRY'S FIRST PEER OUTREACH PROFESSIONAL

As a formerly homeless youth and a client of The Night Ministry, Sharday Hamilton has a unique ability to connect with young people experiencing homelessness. In 2018, Sharday served as The Night Ministry's first Peer Outreach Professional, a new position designed to bolster the Youth Outreach Team's engagement with clients while providing job experience for young people. In addition to making a difference locally as a member of the team, Sharday has had an impact nationally through her service on the Youth Advisory Council with the National Network for Youth. Sharday also received the Youth in Action Award by National Safe Place Network during their 2018 national conference. Through her work, Sharday has used her experience with homelessness and her voice to create change in policy, practice, and public knowledge across the United States.



Read more about the Peer Outreach Professional position:  
[www.thenightministry.org/blog/peer-outreach](http://www.thenightministry.org/blog/peer-outreach)

# 6



## CLIENT SURVEYS YIELD IMPORTANT INFORMATION ABOUT THE INDIVIDUALS SERVED BY THE NIGHT MINISTRY

Conducting surveys with clients across all of our programs is an important way The Night Ministry builds a data-driven culture of learning, a goal of our current strategic plan, *Serving in the Next Decade*. During surveys undertaken at the Health Outreach Bus in the spring, nearly a third of Bus clients told us they were literally homeless, living outside, in an empty building, or in a shelter. Of those who do have housing, more than 60% spend more on rent than is considered affordable. From our quarterly surveys of Youth Program clients, we learned that short term shelter is by far the most pressing need of the young people we serve, and that only 16% would have a safe place to be if they weren't staying with The Night Ministry.

To learn more about the individuals whom we serve at the Health Outreach Bus, visit [www.thenightministry.org/blog/ohm-survey](http://www.thenightministry.org/blog/ohm-survey)

# 7

## ASSOCIATE BOARD RAISES OVER \$100,000 IN BANNER YEAR

The Night Ministry's Associate Board, from its inception in 2012, has acted as ambassadors of the agency by engaging the Chicago community through volunteering, fundraising, networking, and advocacy opportunities targeted towards young professionals. FY18 was a banner year for the Associate Board. Through Night Lights, their annual gala, the Associate Board raised over \$100,000—the most raised since their first gala five years ago. Throughout the year, members of the Associate Board logged more than 1,200 hours of service to The Night Ministry:

- Preparing for the annual Night Lights gala
- Cultivating relationships with corporate partners like Allstate, resulting in additional service projects and donations
- Hosting numerous social fundraisers with local partners including Emporium Arcade Bar, the Grafton Pub, Hamburger Mary's, Hutch American Bistro, Kendra Scott, and Revolution Brewing among others
- Participating in direct service to The Night Ministry's programs via Service Saturdays and serving meals to The Night Ministry's clients, providing the invaluable opportunity to connect with the agency's mission and those whom we serve

The Associate Board is a passionate, committed group of volunteers, and with the help of donors, sponsors, and auction supporters, they make a lasting impact for The Night Ministry.

For more information about the Associate Board:  
[www.thenightministry.org/associate-board](http://www.thenightministry.org/associate-board)



For a video interview about the award with Paul W. Hamann, The Night Ministry's President & CEO, visit: [www.thenightministry.org/blog/henry-schein](http://www.thenightministry.org/blog/henry-schein)



## **HENRY SCHEIN AWARD RECOGNIZES THE NIGHT MINISTRY'S MOBILE HEALTH CARE APPROACH**

In April of 2018, the medical supply company Henry Schein awarded The Night Ministry the Henry Schein Cares Gold Medal for excellence in expanding access to health care to underserved populations. The Night Ministry was honored for its innovative programs that bring free basic health care to its clients. An independent panel of judges selected The Night Ministry as this year's gold medalist from a field that also included silver and bronze medalists. Each medalist receives a cash award and \$10,000 worth of product from Henry Schein.



## 16 EMPLOYEES HONORED AT ANNUAL REAP THE REWARDS OF SERVICE LUNCHEON

On March 7, 2018 The Night Ministry honored 16 employees at its annual Reap the Rewards of Service Luncheon. Employees of The Night Ministry come from a wide variety of backgrounds while sharing a common dedication to improving the lives of those who are experiencing homelessness or poverty. A sign of organizational success is the longevity of service from diverse members of staff. Sixteen of these long-serving staff members celebrated milestone years with The Night Ministry in 2018. We were pleased to recognize one employee, receptionist Diane Williams (pictured on the right), who marked 25 years of service, two employees who marked 20 years, and 13 others celebrating 5-, 10-, and 15-year milestones. Honorees were presented with awards by Paul W. Hamann, The Night Ministry's President & CEO, and Alicia Pond, Chair of The Night Ministry's Board of Directors.



For a complete list of honorees:  
[www.thenightministry.org/blog/reap-the-rewards-2018](http://www.thenightministry.org/blog/reap-the-rewards-2018)

# 10

## SERVING AT THE INTERSECTIONALITY OF HOMELESSNESS

There is no single cause of homelessness. It is the result of the interplay of circumstances, social policies, and difficult choices. Factors such as health care, housing affordability, race, and sexual orientation all play a role in bringing about homelessness as well as shaping the experience of it.

During a presentation at Lighting Up the Night, The Night Ministry's Annual Awards Dinner & Auction, President & CEO Paul W. Hamann focused on what can be called the intersectionality of homelessness as well as the ways The Night Ministry helps members of our community at the intersections.

To learn more about the intersectionality of homelessness, watch this video, which premiered at Lighting Up the Night: [bit.ly/2SR5xx9](https://bit.ly/2SR5xx9)





# FY 18 CONTRIBUTIONS

The Night Ministry gratefully acknowledges all individuals, foundations, corporations, congregations, schools, Associate Board members, and members of the Board of Directors who tirelessly advocate in the community and secure gifts on our behalf. Please note that the below list includes only those gifts made directly to The Night Ministry between July 1, 2017, and June 30, 2018. If we have inadvertently omitted or misspelled your name, please help us correct our records by calling the development department at 773-506-6006.

## BEACONS OF HOPE

*(Monthly/Recurring Donors)*

Anonymous (34)  
Jessica Agin  
Barbara & Kenneth Alexander  
Susan Allen  
Eleanor Shoshany Anderson  
Erin Archer  
Diane Austin  
William Bekker  
Bryan Berend  
David Borowski  
Laura & Kenneth Brichetto  
Debra M. Bruce  
Megan Brunner  
Patrick V. Buckley  
Jessica W. Buha  
Kathleen & John Bychowski  
Donna L. Callahan &  
    Martin J. Fitzgerald  
Mattheis Carley  
Serena A. Carroll  
Shannon Anne Carter  
Charleen Cepek  
Susan & Edward Ciolkosz  
Clinical System Specialists, Inc.  
Amy & Samuel Crider  
Catherine Crino  
James Davisson  
Bertha DePriest  
Benjamin Apollo Dionysus  
Marisa & Robert Doherty  
Michael & Diane Dolesh  
Henrietta Dombrovskaya  
Lexie & Louis Dore  
Lian Drago  
Keira Dubowsky

Susan J. Dwyer-Marshall  
Aaron Eastham  
Barbara J. & Robert M. Edmunds  
Mary Anne Edwards  
Arthur S. Elstein  
Karis Findlan  
Rebekah Fitchett  
Megan Flood  
Mark A. Fraser  
James Friedland  
Shirley Garland  
Sarah E. Generes  
Laurie & Brian Gingrich  
Robert Gordon &  
    Sophie Haroutunian-Gordon  
Kenneth Green & Holly Wathan  
Jessica Griffiths  
Michael Haffler  
Paul W. Hamann  
Julie Hanahan  
Dorothy J. Hoffner  
David Hynds  
Helen Jameson  
Francis & Catherine Kaihatsu  
William Karnoscak &  
    David Barnett  
Mary & Dennis Kelly  
Ann E. Kerbs  
James & Patricia Kowalkowski  
Ruth Kozlowski  
Robert Kravitz/Altura Solutions  
    Communication  
Sami Kruger  
Leslie Kuhagen  
Michele S. Kurlander

Maia Lamdany  
William J. Lauck  
Kris & Sheri Lenzo  
Teresa Lindem  
Krystan Lordahl  
Jennifer Lors  
Anne & Thomas Lysaught  
Sylvia J. Maconaghy  
James Madden  
Kenneth J. Madura  
Julie S. Mallory  
Roseann M. Mark  
Queen Ann Marsh  
Cindy & Paul Maturo  
Yvette Maxie  
James P. McCaffrey  
Daniel McKeegan  
Megan Marie Metzger  
Geoffrey Meyer  
Elizabeth Miller  
Perriann L. Miller  
Karen Mirante  
Jennifer R. Moran  
Annie & Scott Mygind  
Pauline Nolte  
Richard Nordstrom  
Frances M. O'Hern  
Christopher Pena  
Jane Sisco Perkins & Jim Perkins  
Tedd Peso  
Sallie H. Pickens  
Bernadine & Edward Pillar  
Katherine & Michael Raleigh  
Jessica Reese  
Mary Louise Carter Rhodes

Caroline A. Roberts  
Dayle Roberts  
Erin Ryan & Ryan Spangler  
Christina & Brandon Salesberry  
Chris Santiago  
Leanne Sardiga & Chris Schluter  
Melissa Schulte  
Leslie A. Simmer  
Loren Y. Simmons  
Arlie Sims  
Dyhan Slaughter  
Leigh Soares  
David S. Sperling  
Jeanne Schwenk Steen  
Whitney Stein  
Louise Sterett  
Martha Strong  
Lara Suvada  
James F. Thaxton  
Nancy T. Trimble  
Danielle Christine Tucker-Crowder  
John & Virginia Ulaszek  
Peggy J. Vierk  
Kathleen Vito  
Dianne Washburn  
Alma J. Washington  
Sharon A. Waskow  
Stephanie & Robert Weddell  
Mary P. Bacik White  
Sarah Winek  
Benjamin Worrel  
Sandra Wronski  
Kayla J. Yurick  
Laura Zeller  
Sherry & Tom Zimmerman

# AGENCIES, BUSINESSES, CIVIC GROUPS, CORPORATIONS, FOUNDATIONS, GOVERNMENT, SCHOOLS

## Luminaries

\$25,000+

Anonymous (5)  
Blue Cross & Blue Shield of Illinois  
Chicago Dept. of Family and Support Services  
Chicago Dept. of Public Health  
ComEd, An Exelon Company  
Edward A. and Evelyn M. Dik Family Foundation  
Empower to Succeed Foundation  
Illinois Dept. of Human Services  
Jones Day  
Julius Frankel Foundation  
Michael Reese Health Trust  
Polk Bros. Foundation  
Prince Charitable Trusts  
The Bank of America Charitable Foundation, Inc.  
The Chicago Community Trust  
The Crown Family  
The Dancing Skies Foundation  
The Elizabeth Morse Charitable Trust  
The Fama Family Charitable Fund  
The Grainger Foundation

The Harry and Jeanette Weinberg Foundation  
The Pierce Family Charitable Foundation  
The Potter's Clay Foundation  
U.S. Dept. of Health & Human Services  
U.S. Dept. of Housing & Urban Development  
VNA Foundation

## Constellations

\$10,000 - \$24,999

Anonymous (2)  
A.G. Cox Charity Trust  
BMO Harris Bank  
Bowman C. Lingle Trust, BMO Harris Private Bank  
Carl R. Hendrickson Family Foundation, Bank of America, N.A., Trustee  
Chicago Teachers Union Foundation  
Colonel Stanley R. McNeil Foundation, Bank of America, N.A., Trustee

Conant Family Foundation  
Daniel F. and Ada L. Rice Foundation  
Dr. Scholl Foundation  
Eleanor Network at Chicago Foundation for Women  
Garvey's Office Products  
Gil & Marlene Bowen Christian Outreach Fund  
Grant Healthcare Foundation  
Helen Brach Foundation  
Henry Schein, Inc.  
Hoellen Family Foundation  
Joseph & Bessie Feinberg Foundation  
Mr. & Mrs. Michael Keiser Donor Advised Fund of the Chicago Community Foundation  
Murray & Diana Johnson Charitable Fund, a Donor Advised Fund at Renaissance Charitable Foundation Inc.  
Northern Trust  
Peoples Gas  
Quarles & Brady LLP  
The Andrew and Alice Fischer Charitable Trust  
The Berger Family Foundation, Inc.  
The John R. Houlsby Foundation  
The Joyce Foundation  
The Negaunee Foundation  
The Owens Foundation  
The Speiser Family Foundation  
Washington Square Health Foundation

## City Lights

\$5,000 - \$9,999

Alfredo & Ada Capitanini Foundation  
Arch W. Shaw Foundation  
AT&T Illinois  
Benjamin B. Green-Field Foundation

Butler Family Foundation  
Carol Lavin Bernick Family Foundation  
Charles & M. R. Shapiro Foundation  
Charles Schwab & Co., Inc. Emergency Food and Shelter National Board Program  
Fifth Third Bank Chicago  
Fred J. Brunner Foundation  
George M. Eisenberg Foundation for Charities  
Greater Chicago Chapter of ALA  
Husch Blackwell LLP  
JKS Foundation  
Latham & Watkins LLP  
Lincoln Property Company  
McGraw Foundation  
NB Ventures, Inc.  
Paluch Family Foundation  
Patrick and Anna M. Cudahy Fund  
Rooney Rippie & Ratnaswamy LLP  
Season of Concern  
Shawn M. Donnelley Fund, a Donor Advised Fund of The Chicago Community Trust  
Sulzer Family Foundation  
Sweeney Family Foundation  
The Blowitz-Ridgeway Foundation  
The Chatlos Foundation, Inc.  
The Donnelley Foundation  
The John D. & Catherine T. MacArthur Foundation  
The M.J. O'Brien Family Foundation  
The Siragusa Family Foundation  
The Sondheimer Family Charitable Foundation  
The Webb Foundation  
The William R. Johnson Family Foundation  
Therese Foundation  
Vistex, Inc.

W.P. & H.B. White Foundation  
Westchester Community Foundation

## Guiding Lights

\$1,000 - \$4,999

Anonymous (2)  
Academic Achievement Institute Corp.  
AIDS Foundation of Chicago  
ALIVE Rescue  
Allegis Group Foundation  
American Society of Travel Agents  
Arkes Family Foundation  
Bross Family Foundation  
C. Louis Meyer Family Foundation  
Charles River Associates  
CIBC Bank USA  
Cole Family Charitable Fund, a Donor Advised Fund of The U.S. Charitable Gift Trust  
Community Foundation of Greater Fort Wayne, The Luminous Fund  
Edward & Rose Donnell Foundation  
Elick & Charlotte Lindon Foundation  
Francis Beidler Foundation  
Frawley Family Foundation  
Gallery Victor Armendariz  
Glenbrook South High School  
Global Indemnity Group, Inc.  
Hansen-Furnas Foundation, Inc./Kirsten & Brian Barkley  
Harry F. Chaddick & Elaine Chaddick Foundation, Inc.  
Ice Miller LLP  
Illinois Association of Free & Charitable Clinics  
Illinois Tool Works Foundation  
IMC Chicago Charitable Foundation





Ira Kaufman Family Foundation/  
Stephen & Lori Kaufman  
Irving Harris Foundation  
Jacob Best Foundation  
Jocarno Fund  
John Marshall Family Foundation  
JPMorgan Chase & Co.  
Kovler Family Foundation  
Lakeshore Foundation, Inc.  
Legalpeople, LLC  
Lloyd A. Fry Foundation  
Lycée Francais De Chicago, Inc.  
Mary Lou Downs Foundation  
MB Financial Bank, N.A.  
Meeting Tomorrow  
Mercer Health & Benefits LLC  
Million Dollar Round Table  
Non Profit Risk Services, Inc.  
Northwestern University  
Patrick G. & Shirley W. Ryan  
Foundation  
Paul W. Franke Family Foundation

Peoples Gas & North Shore Gas  
Community Fund  
Philip M. Friedmann Family  
Charitable Trust  
Pledgeling  
Press Adelman Foundation  
Rachel B. Williams Foundation  
RBC Wealth Management  
Resource Partners Chicago, Inc.  
Sargent Family Foundation  
Sauganash Woman's Club  
Foundation  
Simple Truth  
Target Corporation  
The Bishop Family Fund, a Donor  
Advised Fund at the  
Renaissance Charitable  
Foundation, Inc.  
The CarMax Foundation  
The Evans Beneditz Missionary  
Trust Fund  
The Hickey Family Foundation

The Kristin Linnea Skvarla  
Foundation  
The Lions Club of Long Grove, Inc.  
The Maurice Foundation  
The Power Family Foundation  
The Whittington Family Foundation  
Thrivent Financial  
TransTech IT Staffing/  
Mary Davenport  
Troost Cemeteries, Inc.  
UBS  
Walter and Caroline Sueske  
Charitable Trust  
Washingtonian Health Care  
Foundation  
William and Wilma Dooley  
Foundation

**Streetlights**

**\$500 - \$999**  
AmazonSmile Foundation  
Charles Schwab Foundation

Clinical System Specialists, Inc./  
Edith D. Browne  
Health and Medicine Policy  
Research Group  
Hutch Bistro  
International TEFL Academy  
Kardos Family Foundation  
Katherine L. Olson Charitable  
Foundation  
MAXIMUS Foundation  
Milliman, Inc.  
The Lumpkin Family Foundation  
The Walt Disney Company  
Foundation  
Tony DeRosa Foundation  
USG Foundation, Inc.  
Walmart  
Wild Life Flea Flyers  
WPNT Ltd./Wixted Pope Nora  
Thompson & Associates

**Lanterns**

**\$250 - \$499**  
Anonymous  
Centennial Securities Company  
Chicago Spirit Brigade  
Draper and Kramer, Inc.  
Forefront  
Heat & Frost Insulators &  
Allied Workers  
Max Goldenberg Foundation  
Mile High United Way  
Murray and Virginia Vale  
Foundation  
Patina Solutions  
Penserra Securities LLC  
Perkins Coie  
Sacred Heart Schools  
St. Viator High School



# CONGREGATIONS & DENOMINATIONS

## Constellations

\$10,000 - \$24,999

Kenilworth Union Church  
Winnetka Congregational Church

## City Lights

\$5,000 - \$9,999

American Province of Little Company of Mary Sisters  
Berkeley Hillside Presbyterian Church  
First Presbyterian Church of Lake Forest  
Glencoe Union Church  
Southminster Presbyterian Church, Arlington Heights  
Union Church of Hinsdale  
Women's Association of Glenview Community Church

## Guiding Lights

\$1,000 - \$4,999

Christ Community Presbyterian Church, North Riverside  
Community Presbyterian Church of Clarendon Hills  
Congregation Hakafa, Glencoe  
Congregational UCC of St. Charles  
Congregational United Church of Christ of Arlington Heights  
Episcopal Church Women of the Diocese of Chicago  
First Congregational Church of La Grange  
First Congregational Church of Western Springs  
First Congregational Church of Wilmette  
First Congregational United Church of Christ, Naperville  
First Presbyterian Church of Wilmette  
Fourth Presbyterian Church, Chicago  
Glenview Community Church

Glenview Community Church Fund at The Chicago Community Trust  
Glenview United Methodist Church  
Gloria Dei Lutheran Church, Downers Grove  
Good Shepherd Lutheran Church, Palos Heights  
Grace Lutheran Church & School, River Forest  
Highland Park Presbyterian Church  
Holy Trinity Lutheran Church, Chicago  
Illinois Conference of the United Church of Christ  
Immanuel Evangelical Lutheran Church, Chicago  
Morton Grove Community Church  
Our Saviour's Lutheran Church, Arlington Heights  
Park Ridge Presbyterian Church  
Queen of All Saints Basilica, Chicago  
Redeemer Lutheran Church, Hinsdale  
Resurrection Lutheran Church, Chicago  
St. Giles Family Mass Community, Oak Park  
St. Luke Presbyterian Church, Downers Grove  
St. Pauls United Church of Christ, Chicago  
Woman's Society of First Congregational Church of Western Springs  
Yorkfield Presbyterian Church, Elmhurst

## Streetlights

\$500 - \$999

Bridgeway Sunday Worship Service, Bensenville  
Church of the Transfiguration, Palos Park

Community Church of Barrington  
Edgebrook Community Church, Chicago  
Evanston Meeting of Friends  
Faith United Methodist Church of Orland Park  
First Presbyterian Church of La Grange  
First United Methodist Church, Evanston  
First United Methodist Church of Park Ridge  
Grace Lutheran Church of Evanston  
Grace United Methodist Church, Naperville  
Pilgrim Congregational Church, Oak Park  
Pilgrim Lutheran Church and School, Chicago  
Plymouth Congregational UCC, Burlington, Wisconsin  
Sauganash Community Church, Chicago  
St. John UCC, Arlington Heights  
St. John's United Church of Christ, Mokena  
Sts. Faith, Hope and Charity, Winnetka  
Trinity United Methodist Church, Mount Prospect  
United Church of Hyde Park, Chicago  
United Methodist Church of Libertyville  
Wellington Avenue United Church of Christ, Chicago

## Lanterns

\$250 - \$499

Anshe Emet Synagogue, Chicago  
Barrington United Methodist Church  
Bethel United Church of Christ, Elmhurst

Calvary United Protestant Church, Park Forest  
Church of the Three Crosses, Chicago  
First Congregational Church UCC, Des Plaines  
First United Methodist Church, Chelsea  
First United Methodist Church, Downers Grove  
Irving Park Lutheran Church, Chicago  
Mary Seat of Wisdom Parish, Park Ridge  
North Shore Baptist Church, Chicago

Presbyterian Church of Western Springs  
Presbyterian Women of the First Presbyterian Church of Deerfield  
Sinsinawa Dominicans  
St. Andrew United Methodist Church, Homewood  
St. Isaac Jogues Parish, Niles  
St. Mark's Episcopal Church, Barrington Hills  
St. Peter's United Church of Christ, Skokie  
Trinity United Church of Christ, Deerfield  
Wicker Park Lutheran Church, Chicago



## MATCHING GIFTS

Allegis Group Foundation  
 Allstate Giving Campaign  
 Amsted Industries Foundation  
 ArcelorMittal  
 Barings LLC  
 Boston Community Capital  
 Capital One Services, LLC  
 Centennial Securities Company  
 ComEd, An Exelon Company  
 Discover Financial Services  
 Dolby Match Program  
 Follett Corporation  
 Gap Foundation Match Program  
 GE Foundation  
 Goldman Sachs & Co.  
 W. W. Grainger  
 Greater Horizons  
 Harrison Street Real Estate Capital  
 Illinois Tool Works Foundation  
 IMC Chicago Charitable  
 Foundation  
 Incyte Corporation  
 JBT Corporation  
 JPMorgan Chase Foundation  
 Kirkland & Ellis LLP  
 Leo Burnett Company  
 Liberty Mutual Insurance  
 McDonald's Corporation  
 Medtronic  
 Midland National Life Insurance Co.  
 Million Dollar Round Table

Motorola Solutions Foundation  
 NASDAQ  
 Occidental Fire & Casualty  
 Company  
 PCS Administration (USA), Inc.  
 Peoples Gas Light and Coke Co.  
 Pfizer Foundation Matching  
 Gifts Program  
 Praxair Matching Gifts Program  
 Salesforce.com Foundation  
 The Arthur J. Gallagher Foundation  
 The Baxter International  
 Foundation  
 The Benevity Community  
 Impact Fund  
 The Boston Consulting Group, Inc.  
 The CarMax Foundation  
 The John D. & Catherine T.  
 MacArthur Foundation  
 The Lumpkin Family Foundation  
 The Skillman Foundation  
 The Standard Insurance Company  
 The Walt Disney Company  
 Foundation  
 Transunion  
 Truist  
 U.S. Bank Foundation  
 UBS Matching Gift Program  
 USG Foundation, Inc.  
 Virtus Investment Partners  
 Zurich North America



## TRIBUTE GIFTS

### IN HONOR OF

*(honoree's name in bold, donor's name in italics)*

#### ACGME Department of Education

*Timothy Prince Brigham*

#### ACGME Finance & Operation Leadership Team

*Mr. & Mrs. John Ogunkeye*

#### JoAnne Adams

*Elliot Adams*

#### Gordon Addington

*Anthony R. Hipp  
 Mr. & Mrs. Anthony Volpe*

#### Audrey Alberts

*Mr. & Mrs. James S. Hogan*

#### Megan Albrecht

*Margaret Zerega*

#### Aleshia

*Sarah J. Arehart  
 Lillian M. McCartin  
 Rachel Rhodes*

#### Alfredo

*Jennifer Lynn Moore*

#### Susie Allen & Scott Piebenga

*James C. Freetly  
 Anna Grady*

#### Julia & Micah Ariel-Rohr

*Mr. & Mrs. Larry Benowitz*

#### Emily Armendariz

*Mary Joan Lee*

#### Henry Ballard

*Ann Ballard*

#### Tom Ballentine

*Maureen E. Marcotte*

#### Sam Baltrusaitis

*Mirielle Barker*

#### Peter & Betsy Barrett

*Mr. & Mrs. William A. Goldstein*

#### Kristin Barrow & BJ Hollowell

*Hannah Arenstam  
 Kelley A. Christensen  
 Cynthia L. Pugh  
 Kim & Dennis Riechert  
 Joey Szynal  
 Team 15 at Assurance  
 Jay O. Van Proyen  
 Kenneth Van Proyen*

#### Anthony Bayt

*Lorraine A. Klabunde*

#### Tom Behrens

*Elizabeth L. Raiman*

#### Dave Berger

*Mr. & Mrs. Steven L. Baron  
 Robert M. Berger  
 Mr. & Mrs. Barry E. Morgen  
 Mr. & Mrs. David Seidman  
 Willard L. Shonfeld  
 Mr. & Mrs. David R. Stec*

#### Dave & Nicole Berger

*Janice L. Benson & Barry Mizock  
 Rachel Kaplan & Bob Riesman  
 Debra Pogrud Stark &  
 Jessica M. Choplin*

#### Jackson Berger

*Mr. & Mrs. David Berger  
 Kristine E. Peterson*

#### Steve Bishop

*David G. Berger*

#### Charlie Bittermann

*Mr. & Mrs. David J. Hochman*

#### Michael & Helen Blair

*Lisa B. Yondorf*

#### LaCountess Blaney

*Kenneth V. Hartfield*

#### Barbara Bolsen

*Mr. & Mrs. William D. Bolsen, Jr.  
 Tom & Nancy Hanson  
 Mary O'Connell  
 Mr. & Mrs. A. Robert Taylor  
 Dianne Witkowski*

#### George & Judy Bonnett

*Rev. Mabel L. Rice*

#### Shawna Bowman

*Sharon K. Bowman  
 Beth L. Brown  
 Andrea D. Denney  
 Abby Parcell*

#### The Brennan Family

*Colleen Brennan*

#### Paul Brody

*Martin Brody*

#### The Brown Family

*Donovan Prokop*

#### Kathy Browne

*Susan Hadley*

#### Bryn Mawr Community Church

*Kenyetta Jackson*

#### Ginny Campbell

*Joey Trachtman*

#### Betsy Carlson

*Elizabeth Higgins-Beard*

#### Bob Carson

*Mr. & Mrs. David T. Erie*

**Centennial Securities  
Company Clients**

*Mario Bernardi  
Michael Ochoa*

**Judy Chamblis**

*Dr. Andrew Griffin & Moira Collins*

**Zofie & Maeta Christian**

*Christopher D. Weber*

**Patrick Christopher**

*MacKenzie Martin*

**Barbara Clarke**

*Mr. & Mrs. Dennis A. Aldred*

**Mary Louise Cochran**

*Deborah E. Davis*

**Sr. Deborah Conley, LMC**

*Jocelyn A. Mesina*

**Kaitlyn Conroy**

*Mr. & Mrs. Robert Conroy*

**Eleanor Conti**

*David M. Schiffman*

**Merle Cooper**

*Tyra Notorangelo*

**Father Matt Creighton**

*Peggy Callahan*

**Mary Jo Crosby**

*Kathianne & David Crane*

**M. Elizabeth Cross**

*Teresa Elizabeth Cross*

**Harrison & Kathy Cunningham Jr.**

*Charlene L. Holtz*

**Dale**

*Karen McGinnis*

**Jim Dashiell**

*Mr. & Mrs. C. William Busse*

*Paul W. Hamann*

**Christopher Davis &  
Andy Cheng**

*Timothy Davis*

**Patricia Delacruz**

*Julia Shoaf*

**Dick Dickerson**

*Amina J. Dickerson*

**James R. Donnelley**

*Nina H. Donnelley*

**Cas Dougherty**

*Mary Dougherty*

**Norm Du Fore**

*Fred Conrad*

**Barbara Edmunds**

*Marianne E. Lombard-Koy*

**Robert Edmunds**

*Peter Gubbe*

**Kathy Egelston**

*Mr. & Mrs. E. Martin Egelston*

**Cal Eisenberg**

*Arlene Pass*

**Mary Helen Ekstam**

*Mr. & Mrs. Jon Rasmussen*

**Kathleen & Steve Elkins**

*Daniel P. Borland*

**Rev. Bill Ennis**

*Peggy Callahan*

**Mette Eriksen**

*Betty J. Eriksen*

**Jane & Duane Feurer**

*Jean Feurer*

**Jillian Foley & William Schwartz**

*Elizabeth A. Calderon*

*Vivian Witkind Davis*

*Christopher Gonzalez*

*Allison Heiser*

*Lila Krasa Schwartz Goldstein*

*Shreyas Ravi*

*James Ryan*

*Hannah Schwartz*

*Jason Schwartz &*

*Hannah Gerstenblatt*

*Stephanie Schwartz*

**Francis W. Parker Pride  
Committee**

*Edward Wagner*

**Jackie & Dan Frett**

*Susan M. Rusk*

**Evelyn Friedman**

*Mr. & Mrs. Sidney M. Friedman*

**Jean Fujii**

*Susan Fujii*

**Kiyo Fujii**

*Susan Fujii*

**Kyoko Fujii**

*Mr. & Mrs. David Haebich*

**Olivia & David Giampietro**

*Mr. Nicholas L. Giampietro, Esq.*

**Anne & Bill Goldstein**

*Catherine Koehler*

**William Goldstein**

*Mr. & Mrs. Robert S. Blatt*

*Mr. & Mrs. Marcel Frenkel*

*Jim & Kay Mabie*

**Lindsey Gradone**

*Katherine Fasullo*

**Gregory Gross**

*B.J. Birkhahn-Rommelfanger*

*Rachel Birkhahn-Rommelfanger*

*Cheryl L. Dykstra*

*Darcy Garrett*

*Mark & Deb Gross*



*Judith A. Koptik*

*Marlene Morton*

*Laura S. Sailer*

*Carrie Kreps Wegenast*

**Bob & Joyce Groth**

*Katherine Groth*

**James & Brenda Grusecki**

*Dr. Bridget Somine*

**Rowan & Finn Guffey**

*Rhonda O'Connor*

**Paul Hamann**

*Mr. & Mrs. Robert W. Eder*

*Barbara A. Weiner*

**Martha Hanson**

*Margaret & Pierre Roche*

**David Harris**

*Abby Clancy*

**Andrea Hawkins-Kemper**

*Mary Early-Zald*

**Melissa Hemzacek**

*Susan O'Neill*

**Richard & Karen Herman**

*Mr. & Mrs. Arnold J. Dahm*

**Elizabeth Higgins**

*Anne Konner Higgins*

*Ann Jaksa*

**Andrew Hochman**

*Mr. & Mrs. David J. Hochman*

**Sue Long & Andy Hochman**

*Mr. & Mrs. Jim Griffiths*

**Rob Hoff**

*Susan Hoff*

**Ike Hong**

*Mr. & Mrs. Mark R. Neaman*

**Joseph Hubbell**

*Benita C. Serio*

**Mary Ann Imbra & Alan Zable**

*Mr. & Mrs. Edward L. Kowalski*

**Mikey Jaksinick**

*Janet M. Greenfield*



**Mr. & Mrs. Keith R. Jans**  
Mr. & Mrs. James S. Hogan

**Elaine & Mark Janus**  
Elizabeth St. Louis

**Norman P. Jeddelloh**  
Michele M. Thompson

**Art Johnston**  
Terry P. Cosgrove

**Keely Jones & Angie Frank**  
Mr. & Mrs. Don Frank  
Susan Salisbury  
Erin Walaszek

**Marissa Jones & Bill Friedman**  
Mr. & Mrs. Stephen J. Bisgeier  
Caroline Brady  
Sara Coleman  
Chris Connelly

Elena Craft  
Kathleen Gallagher  
Sharon Hermes  
Holly Hoenig  
Theodore G. Jones  
Mr. & Mrs. Larry Kurtzon  
Camille Larson  
Claudine Pauselli  
Catherine Dun Rappaport  
Laura K. Raskin  
Paul Rudd  
Mr. & Mrs. Michael Sciallis  
Cody Shimek  
Margaret Terry

**Christopher Joyce**  
Julie Roberts

**Joan Judelson**  
Christine A. Speiser

**Robert Judelson**  
Philip M. Friedmann

**Jon Kaehn**  
William Goostree

**Sara Kalina**  
Ryna T. Becker  
Vickie Gorlick

**Nate Kelp-Lenane**  
Claudia Kelp-Lenane

**Bonnie Kepplinger**  
Mary Kathryn Black  
Michelle Dreiling  
Katy Gross  
Edward Lee Hicks  
Brad Lewis  
Warren Long  
Sandy Moore  
Jenny Reed  
Steve Smith

**John Kimbrough**  
Jeremy E. Biles

**Rev. Michael Kirby**  
Marilyn M. Woodman

**Timothy Kiss**  
Colleen McGarry

**Lester & Becky Knight**  
Mr. & Mrs. Charles Knight

**Jon Knott**  
George Stephen Couladis

**Steve Koebel**  
Kyle Kingsbury

**Lora Kreeger & Mory Kreeger Sanderson**  
Laura & Chia Tze

**Ruth Krugly**  
Mr. & Mrs. Joseph Liss

**Carl Kunda**  
Kenneth Kunda

**Krista Kutz**  
Jennifer Wyatt

**Janine Landow-Esser**  
Lois F. Hauselman  
D. Scott Watson

**Laura Lindsay**  
Mara Lindsay

**LGBTQ Kids**  
Suellen Cook

**Matt Libel & Nicky Balduf**  
Michael Alexander Billings  
John Barrick Bollman  
Kristin Bonnett  
Mary Patricia Brogan  
Laura M. Campbell  
Daniel Collins  
John Duffy  
Kris & Steve Garcia  
Sarah Gibson  
Julia E. Griesemer  
Cara Hawkins-Jedlicka

Casey & David Head  
Jennifer Huwe  
Alex Lee  
Tony & Carol Libel  
Dianne & Mike Phillips  
Mary Kate Roohan

**Kathleen & Thom Lobe**  
Janine Landow-Esser & Jeffrey L. Esser

**Lee Lohman & Charlotte Whitley**  
Daryl Bouma

**Ann Luban**  
Melissa Werbow

**Carol Mackoff**  
Merle Kharasch Gross

**Melissa Maguire**  
Madeleine K. Maguire

**The Mahnich Family**  
Jackie Spencer

**Courtney & Ryan Malawy**  
Tricia A. & William J. Tokash

**Erin Malloy**  
Mr. & Mrs. Frank Baltrusaitis

**Megan Mardy & Family**  
Laura O. Bearce

**Bill & Judy Martinez**  
Mary T. Martinez

**Mary & Victoria's Anniversary**  
Robin J. Koloms

**Ron McClure & Vince Schall**  
Matthew Kaspar

**Athena Diana McKanna**  
Pasquale Perrone

**Terry McMahon**  
Nancy Brandes  
Pam Plane & Calvin Bower

**Georgia McSweeney**  
*Elizabeth Stovall*

**Rev. David Meredith**  
*Rev. Douglas Damron*

**Mr. & Mrs. John P. Metzger**  
*Mr. & Mrs. James S. Hogan*

**Greg Morris**  
*Terry & Barbara Ferrari*

**Michael Mosca**  
*Nicholas Mosca*

**Pastor Craig Mueller**  
*Kathryn L. Vigen*

**Candace Musick**  
*Peter Mondejar*

**Amelia Nameche**  
*Dena Lichterman*

**Barrett Newell**  
*Mandy Moody*

**Betsy Nore**  
*Deborah V. Edidin*

**Jack O'Connor**  
*Denise F. Ursini*

**The O'Donnell Family**  
*Mary T. O'Donnell*

**The O'Donnells**  
*Adele O'Donnell*

**Joseph & Tess O'Hern**  
*Frances M. O'Hern*

**Julia M. O'Hern**  
*Frances M. O'Hern*

**Aisling & Brian O'Laoire**  
*Siobhan O'Laoire*

**David Ortman**  
*Trudy Ortman*

**Serena Parod**  
*William R. Parod Jr.*

**Burke Patten**  
*Kathryn Patten*

**Abigail Paulsen**  
*Mr. & Mrs. Jeffrey Paulsen*

**Vice President Mike Pence**  
*Jennifer Panek*

**The Perman Family**  
*Christine Potthoff*

**Betsy & Mike Peska**  
*Jono & Piper Rothschild*

**Tedd Peso**  
*Rachel Boon*

**Brian Peterlinz**  
*Glenn Andrew Good*

**Nancy Pettinger**  
*Brenda Hauck*

**Tom Petty**  
*Mr. & Mrs. Martin W. Heller*

**Phoenix Hall**  
*Juliet Muccillo & Matthew Pollack*

**Alicia Pond**  
*Mr. & Mrs. Frank B. Chauner*  
*Mr. & Mrs. Brad Gordon*  
*Mr. & Mrs. Stuart J. Hertzberg*  
*Mark A. Johnson & Judith Wright*  
*Janet Carl Smith & Mel Smith*

**Alicia & Peter Pond**  
*Mr. & Mrs. Gary Boostrom*  
*Tina M. Erickson & Mike Kruttsch*  
*Lyndsay Pond White*

**Peter Pond**  
*Chitra Mohamed*

**Roberta Popara, OP**  
*Dorothy & Alan Fredian*

**Sarai Powers**  
*Mr. & Mrs. Morgen K. Jacobson*

**Christy Prassas**  
*Glori Rosenson*  
*Barbara Tieder*

**Isaiah Qadeer-Salvador**  
*Umbreen F. Qadeer*

**Mary Rawlinson**  
*Gary R. Chipman*

**Raymond James Clients**  
*John E. Fitch III*

**Mary Hutchings Reed**  
*Barry Little*

**Dr. & Mrs. William R. Reed**  
*Mr. & Mrs. David Scott Reed*

**Trannika Rex**  
*Andrew Townsend*

**Marie Roche & John Hoo**  
*Margaret & Pierre Roche*

**Jane Rowley**  
*Margaret Schneider*

**Judy & Rick Rushton**  
*Frances F. Brantley*

**Lisa Russ & Ken Tornvall**  
*Joseph Fogarty*

**Allan Ruter**  
*Andrea Herrera*  
*Mr. & Mrs. Marshall C. Mussay*

**Ralph & Kay Ryan**  
*Kathleen M. Ryan*

**Jim & Liz Saldana**  
*Sharon Welk*

**Adolfo Santos**  
*Nora Santos*

**Adolfo Santos & Ken Stone**  
*Merlita R. Arcillas*  
*Stephanie Buckhanon Crowder*  
*Peter Hillsman*  
*Elena M. Jimenez*  
*Michael Francis O'Reilly*

**Dean Schaller**  
*Gregory Gross*

**Travis Schmitz**  
*Deborah M. Brown*

**David E. Scholl**  
*James D. Alt &*  
*Deborah K. McKnight*

**Diane Schulte**  
*Dixie Lee Downes*

**Cathy Schultz**  
*Jane Galen*

**Daniel J. Schwartz**  
*David Y. Schwartz*







**Carolyn & Bruce Stewart**  
*Karen J. Lygizos*

**Nancy Stone**  
*Mollie Spectore Stone*

**Ed Stremich**  
*Dr. V. L. Bresnahan*

**Susie & Chris**  
*Virginia Ayers*

**Marjorie Sutton**  
*Susan M. Rusk*

**Susan Termini**  
*Miranda Pava*

**Dr. Mara Terras**  
*Alexander Terras*

**Jim Thaxton**  
*Amy Carlton*

**The Night Ministry Staff**  
*Paul W. Hamann*  
*Leo Kim*

**The Nurse Practitioners**  
*Dr. Jeannine Forrest*

**The Resurrection Bible Chapel**  
*Rev. William Abel*

**The "Z" Five**  
*Sr. Virginia Bruen, OP*

**Dennis Thorn**  
*Judith & Larry Braskamp*  
*Gail Shiner*  
*Mr. & Mrs. James E. Taich*  
*The Unger/Brodsky Family*

**Ralitzia Todorova & Adam Hoffman**  
*William K. Schwartz*  
*Madeline Sykes*

**Mike Towne**  
*Amanda M. Ford*

**Donald Trinite II**  
*Anne M. Hardy*

**Samantha Tucker & Rebecca White**  
*Seth Captain*

**Austen Tucker-Crowder**  
*Michael Milford*

**Daryl & Jackie Tweeton**  
*Jennifer Tveiten Rifman*

**UCC St. John's Church**  
**Evanston**  
*Dileep Gangolli*

**Eileen Valentin**  
*Nina K. Bell*  
*Judy Ditkowsky*  
*Charlotte Projansky*

**John Velasquez**  
*Melody L. Roggeman*

**Aana Vigen**  
*Jennifer Parks*

**Ed & Joan Walbridge**  
*Jean & Karen Walbridge-Martin*

**Lukey Walden**  
*Mr. & Mrs. John C. Walden*

**Annie Wallis**  
*Jenni Wallis*

**Carl Warschausky & Laurie McCollum**  
*Dr. Lorraine Nadelman*

**Pam & David Waud**  
*Peter Bower*

**Kelsey Waxman**  
*Rhoda Elaine Waxman*

**Margaret Weber**  
*Heidi Kreiss*

**Elliot Weisenberg & Clara Orban**  
*Scott DePierro*

**The Weisenbergs, DePierros, Mulvihills, & Goldmans**  
*Dr. Elliot S. Weisenberg*

**Jarrold Welch**  
*Jennifer Lim*

**Kasey White**  
*Leslie A. Simmer*

**Margaret White**  
*Joanne Butler*

**Steven White**  
*Michael Fancher*

**Dan Willoughby & Rebecca Sholiton**  
*Lucy Ann Robertson*

**The Winchester Family**  
*Thoma Mehl*

**David Wywialowski**  
*Jacqueline C. Hayes*  
*Helen C. Pavia*

**Guy Zakrzewski & Dan Perry**  
*Carol Hodges*

**Lexi Zarrilli**  
*Nathan Andon*

**Pete & Janet Ziegler**  
*Clifford K. McCulley*

**Arielle Zimmerman**  
*Sharon Shavitt*

**Jane Zwiefka**  
*Ashley A. Jakska*

**Jenny Semaca**  
*Ellen Solovy*

**Sharbel Shamoon**  
*Rubina Y. Bokhari*

**Victoria Shannon**  
*Robin J. Koloms*

**Oskar Sierzega**  
*Leah Blough*  
*Pam Britanico*  
*Mr. & Mrs. Andrew DeSanti*  
*Lizel Granada*  
*Jocelyn A. Grubb*  
*Eve M. Kink*  
*Nunzino & Katy Pizza*

**Benita Sinnarajah**  
*Kelsey Hamory*  
*Matthew Rainson*

**Dyhan Slaughter**  
*Loyanna Grieson*  
*Caroline Hudson*  
*Mr. R. Cabell Morris*

**Erin, Ira, Andria & Isaac Slomski-Pritz**  
*Neil A. Pritz & Kathleen M. Slomski*

**Liz & Charles Smith**  
*Mr. & Mrs. Clement A. Erbmman*

**Rev. Emily Snowden**  
*JoAnn M. Rapp*

**Vee Sonnets**  
*Erin Kohlhoff*

**Matthew Sorenson**  
*Indeok A. Oak*

**Ann Soutter**  
*Andrea L. Rhodie*

**Frances & William Springborn**  
*Mr. & Mrs. Paul W. Springborn*

**Neil Steinberg**  
*Joanne A. Sarasin*

**Layla Sterling**  
*Douglas Davis*

## IN MEMORY OF

(honoree's name in bold, donor's name in italics)

<b>Aaron</b> <i>Kristina Lillberg</i>	<b>Eddie Belniak</b> <i>Mr. &amp; Mrs. Donald B. Henneberg</i>	<b>Peggy Callahan</b> <i>Mary Ellen Creighton</i>	<b>Robert Cowell</b> <i>Lorraine B. Tancredi</i>	<b>James Finnegan</b> <i>Mr. &amp; Mrs. Dominic J. Nakis</i>
<b>Omar Abu-Gheida</b> <i>Mr. &amp; Mrs. Elio F. Sidan</i>	<b>Jane Berfass</b> <i>Betty J. Eriksen</i>	<b>Nicolas G. Camcam, Jr.</b> <i>Gloria A. Camcam</i>	<b>Gregory T. Davis</b> <i>Gloria J. Davis</i>	<b>Glen Allan Fischer</b> <i>Mary Flanagan</i>
<b>Bob Adams</b> <i>Mary Adams</i>	<b>Lorraine &amp; Tom Bernacki</b> <i>Paula Bernacki</i>	<b>Jim &amp; Jewel Campbell</b> <i>Arnie &amp; Karen Jeschke</i>	<b>Nathaniel Davis</b> <i>Susan Davis</i> <i>Mr. &amp; Mrs. Christopher Whybrow</i>	<b>Carla Fisher</b> <i>Thomas F. Catania</i>
<b>Adele and Alex</b> <i>Ramona T. Giambalvo</i>	<b>Abraham Bittenson</b> <i>Sharon Meltzer</i>	<b>Tom &amp; Nardi Campion</b> <i>Russell &amp; Suzanne Campion</i>	<b>Tomorrah &amp; Remon Davis</b> <i>Rella R. Jordan</i>	<b>Nicholas Flessor</b> <i>Lorraine Lindgren</i>
<b>Bernice "Bebe" Awerbuch</b> <i>Christine DiThomas</i>	<b>L. Vaughn Blankenship</b> <i>Irene Blankenship</i>	<b>Larry Carlson</b> <i>Lois A. Carlson</i>	<b>Mary Helen McPherson Detmer</b> <i>Lawrence M. Detmer</i>	<b>Irene Flosi</b> <i>Mr. &amp; Mrs. Fred C. Flosi</i>
<b>Alice W. Aysen</b> <i>Dale H. Clothier</i>	<b>Anne &amp; Robert Bloom</b> <i>Leslie Walsh</i>	<b>James Carroll</b> <i>Mr. &amp; Mrs. Francis L. Lavin</i>	<b>Joyce Devlin</b> <i>Jarrie A. Holt &amp; Peter Hufnagl</i>	<b>Samantha Fraser</b> <i>Mark A. Fraser</i>
<b>Joan Banach</b> <i>Mr. &amp; Mrs. James A. Andritsos</i>	<b>Mary Bolt</b> <i>Mr. &amp; Mrs. Timothy Uligian</i>	<b>Jules Victor Carter &amp; Marguerite Houston Carter</b> <i>Mary Louise Carter Rhodes</i>	<b>Mr. &amp; Mrs. James DiSilvestri</b> <i>Catherine A. Gustaitis</i>	<b>Gertrude E. Fredrich</b> <i>Lois J. Christoffersen</i>
<b>Florence &amp; Lorence Bartelt</b> <i>Garry A. Bartelt</i>	<b>Philip Bornhofen</b> <i>Mari Roti</i>	<b>John R. Cepek</b> <i>Charlene Cepek</i>	<b>Joe Drever</b> <i>Diane R. Drever</i>	<b>Salvatore Gaddini</b> <i>Mr. &amp; Mrs. Gregory P. Lendy</i>
<b>Ricardo M. Basch</b> <i>Miriam Basch Scott</i>	<b>Joe Bowen</b> <i>Mr. &amp; Mrs. Gary Silvis</i>	<b>Charlie</b> <i>Gail Bernoff</i>	<b>Edward and Ida D'Silva</b> <i>Maybird D'Silva</i>	<b>Helen &amp; Andrew Galoney</b> <i>Marie J. Galoney</i>
<b>Edwin T. Bauer</b> <i>James J. Bauer</i>	<b>Michael Bowers</b> <i>Mr. &amp; Mrs. Norman E. Bowers</i>	<b>Joe &amp; Anne Chasnoff</b> <i>Barbara Chasnoff &amp; J. Thomas Johnson</i>	<b>Richard Duebner</b> <i>Diana Duebner</i>	<b>Helen Galowitch</b> <i>Susan Janus</i>
<b>Paul Bauerlein</b> <i>Mary Joan Lee</i>	<b>Alma Boyas</b> <i>Rita Lopez</i>	<b>Chuck</b> <i>Herbert E. Gordon</i>	<b>Marilyn Duncan</b> <i>Marilyn Ciucci</i>	<b>Sheldon Garber</b> <i>Joellen P. Garber</i>
<b>Daniel Bednarz</b> <i>Sean D. Egan</i>	<b>Frank Brechling</b> <i>Linda Buccini</i>	<b>Grant Clark</b> <i>Colleen P. Garard-Dahlem</i>	<b>Jack Fahey</b> <i>Thomas Li</i>	<b>Don Levin Gerkow</b> <i>Jodi G. Eisenstadt</i>
<b>Bettie Beeby</b> <i>Mary Beth Coleman &amp; Eileen O'Shea</i>	<b>Frank Bruscato</b> <i>Laura Stranges</i>	<b>Kathleen Condren</b> <i>Terese McHugh</i>	<b>Rita Farina</b> <i>Marian Sassetti-Kend, M.D.</i>	<b>Maury Glussman</b> <i>Elliot Adams</i>
<b>John Belcaster</b> <i>Eileen A. Abbatacola</i>	<b>Rosemarie Bull</b> <i>Deborah Schmitt-Bull</i>	<b>Betty Conley</b> <i>Carol House</i>	<b>Lt. Eric Ferguson</b> <i>Fay Ferguson</i>	<b>Eddie Grant</b> <i>Mr. &amp; Mrs. James J. Nack</i>
<b>Mark Bello</b> <i>Cathy Van Alstin</i>	<b>E. Julian Cabral</b> <i>Esther Perez</i>	<b>Richard Cosentino</b> <i>Deborah Savaiano</i>	<b>Richard S. Ferris</b> <i>Peter &amp; Kim Rauner</i>	<b>Daniel Gray</b> <i>John T. Kennedy</i>

**Daniel J. Guzman**  
*Edwina J. Lamont*

**Betty & Bill Hamann**  
*Mr. & Mrs. Bruce Augustine*  
*Rita M. Hamann*  
*Their Children & Grandchildren*

**Governor Hartfield**  
*Kenneth V. Hartfield*

**Katie Helmstadter**  
*Andrew Phillip Loehrer*

**Paul Henderson**  
*Dr. & Mrs. Bruce Reider*  
*Mr. & Mrs. Peter M. Watt-Morse*  
*R. Bruce Williams*

**Sheila Henry**  
*Mr. & Mrs. David A. Urschel*

**Frank Hoffman**  
*Judith A. Bianchi*

**Mattie Hopkins**  
*Fred Blakey, Jr.*

**Vince Intrivici**  
*Estella & Gerald Cronk*

**Stuart Jackson**  
*Janine Landow-Esser &*  
*Jeffrey L. Esser*

**Lester Jedynak**  
*Mr. & Mrs. William J. Noelle III*

**John**  
*Carol A. Brenner*

**John**  
*Ruth Ultmann*

**Adam Chasnoff Johnson**  
*Barbara Chasnoff &*  
*J. Thomas Johnson*

**Phyllis Kay Johnson**  
*Phyllis Aileen Johnson*

**Lawler, Majella & Michael Joyce**  
*Joseph M. Joyce*

**Robert Julian**  
*Mr. & Mrs. R. Bruce Johnston*

**Robert Kahl**  
*Janet L. Kahl*

**Richard Kalish**  
*Ellie Kalish*

**Herman Kaplan**  
*Gary Miller*

**Kathleen**  
*Gail Shiner*

**Kathy**  
*Mr. & Mrs. James A. Blair*

**Katie**  
*Julia Padvoiskis*

**Peter Kattner, Jr.**  
*Mr. & Mrs. Kenneth T. Woodhouse*

**Chester Kaye**  
*Janine Landow-Esser &*  
*Jeffrey L. Esser*

**Luke Kehoe**  
*Steven B. Thompson*

**Werner Kehr**  
*Sally Kehr*

**Zeke Kelp-Lenane**  
*Claudia Kelp-Lenane*

**Bonnie Keplinger**  
*Judith Alexander*  
*Clint Branam*  
*Jacqueline Claudia Briggs*  
*Leslee R. Carver*  
*Jean Coleman*  
*Rachel Detwiler*  
*Helen J. Ellis*  
*Terry Fertig*  
*Mary K. Hawley &*  
*Michael J. Puican*  
*Mr. & Mrs. Robert Heywood*  
*Donna J. Higgins*  
*Lynn Hyndman*  
*Roberta A. Johnson*  
*Marcia L. Mahoney*  
*Mary Jane Maples*  
*Patricia Motto*  
*Gay Byrne Olk*  
*Nancy O'Malley*  
*Christy Prassas*  
*Marianne Anne Quinn &*  
*Joel A. Goldberger*  
*Patricia & Philip Rashid*

*Sara Rashid*  
*Heidi Schellenger*  
*Eileen Smith*  
*Nancy F. Spicuzza*  
*Mr. & Mrs. William Termini*  
*David Tichy*  
*Mr. & Mrs. David A. Urschel*  
*Ellen J. Wettersten*  
*Nancy Winship*  
*Michael Wood*

**Brian Kinney**  
*Jasmine Rayman-Kinney*

**Toya Klausner**  
*Rosalie K. Fruchter*

**Mabel Kobow**  
*Julie Lillquist*

**Helen & Ed Koglow**  
*Mr. & Mrs. Geoffrey Eysenbach*

**Barbara A. Kohrs**  
*Thomas E. Kohrs*

**Mary Kozinski**  
*Barbara Hinch*

**Bob, Billy & Margaret Kramer**  
*Maryann & Robert Kramer*

**Fritz G. Kreiss**  
*Beverly Kreiss*

**Otto Krensreiter**  
*Anne Marie Hohmeier*

**Lauri Kubinski**  
*Karen Kessler*

**William Laase**  
*Gloria J. Callaci*  
*Joan M. Goda*  
*Judith A. Heyworth*  
*Susan H. Kinsella*

**Barrett Laase**  
*Sandra Laase*



**Peggy “Mom” Lavelle**  
*Mary B. Lavelle*

**Frank Lavin**  
*Mr. & Mrs. Francis L. Lavin*

**Fritzie Leverenzzi**  
*John & Tina Leverenzzi*

**Rev. Lois J. Lewis**  
*Richard D. Lewis*

**James MacMahon**  
*Madelyn MacMahon*

**Bill Maddex**  
*Jennifer R. Moran*

**Maddie**  
*Mr. & Mrs. Paul J. Polin*

**Michael Maddux**  
*Mary Jo Maddux*

**Brendan Mahoney**  
*Sally Swiss*

**Irene Mahoney**  
*H. Russell Barefield &  
Robert A. Mahoney*

**Lillian Mahoney**  
*Mr. & Mrs. Donald L. Mahoney*

**Rev. Akiro Makino**  
*Karen V. Maurer*

**Ralph Mallory**  
*Michael A. Tyllas*

**Jeanne Maloney**  
*Madeleine K. Maguire*

**Marie & Cornelle**  
*Florence Sabia*

**Mary**  
*Karlene Goodman*

**Lottie Matz**  
*Gloria Chance*

**Rev. Charles Mayer**  
*Nancy Mayer*

**Rebecca Mayer**  
*Christine Igo & Marc Cooperman*

**Mary Rose Mc Bride**  
*Suzanne Mc Bride Feldmann*

**Wilma McCallister**  
*Richard G. McCallister*

**John P. McCarthy**  
*Mr. & Mrs. John Conidi*

**Ernestine McDonald**  
*Katherine Risseeuw*

**Carol Jean McDonnell**  
*Mary Ellen Creighton*

**Margaret McIlvain**  
*Elizabeth Czechanski*

**Margaret N. McLaren**  
*Anne M. Hardy*

**Shael David Mesh**  
*William P. Lyman*

**Craig & John Metternich**  
*Jo Ann Metternich*

**Mike**  
*Mr. & Mrs. John G. Radosevich*

**Cynthia Milsap**  
*Rev. & Mrs. Tom Behrens*

**Michael James Minnaugh**  
*Michael Minnaugh*

**Fran Mistrata**  
*Mr. & Mrs. David M. Monack*

**Arthur Mitchell**  
*Mary Joan Lee*

**Mom, Dad, Joe Jr., Millie &  
Mary Jo**  
*Elizabeth Curylo*

**Nathan Mosby**  
*Mr. & Mrs. Cleveland G. Mosby*

**Bill & Monica Mulchrone**  
*William J. Mulchrone*

**My Father**  
*Shams Juveria*

**My Husband**  
*Joyce D. Wiegand-Bavas*

**Nancy, RN**  
*Eugene Ahner  
Susan J. Benloucif*

**Joseph Stephen Nasser**  
*Ann Marie Monson*

**F. Burton & L. Grace Nelson**  
*Sonia Nelson*

**Laurie Neu**  
*Marguerite O'Hara  
Daniel L. Walrath  
Mr. & Mrs. Lawrence Walrath  
Gene Wozniak*

**Becky Noble**  
*Anthony S. Graefe*

**John & Jo Novak**  
*Mr. & Mrs. Robert Novak*

**Justin Novak**  
*Karen & Michael Burmester*

**Audrey Noyes**  
*Mr. & Mrs. Edward W. Noyes*

**Christine Nykiel**  
*Mr. & Mrs. James R. Ruff*

**Jack O'Connor**  
*Denise F. Ursini*

**Kevin O. O'Malley**  
*Mr. & Mrs. Brian J. O'Malley*

**Joanne Palumbo**  
*Florence Palumbo Zilka*

**Lola Parocua**  
*Sharilyn Kay Avila*

**Sam Pass**  
*Mr. & Mrs. William A. Goldstein*

**Mary Jane Pavlak**  
*Barbara Denmark Long*

**Margaret Peat**  
*Maclyn R. Peat*

**Diana M. Perrone**  
*Pasquale Perrone*

**Josephine Peso**  
*Mr. & Mrs. George L. Peso*

**Paula Phipps**  
*Therese Lynch*

**Edward K. Poor III**  
*Mr. & Mrs. E. King Poor*

**Julius H. Preston III**  
*Dana D. Preston*

**Bernie Pygon**  
*Rhonda Purwin*

**Robert Raleigh**  
*Timothy & Julie Farrell*

**Virgil C. Ramos**  
*Joseph E. Ramos*

**Raymond, Catherine & Patrick**  
*Alice Jane Linehan*

**Amber Regan**  
*Jill Regan*

**Joyce E. Reichardt**  
*Kurt Reichardt*

**Samuel Reisman**  
*Mr. & Mrs. Jeffrey T. Sheffield*

**Richard**  
*Jean H. Hallen*

**Paul Rieger**  
*Javier Toubes-Vilarino*

**George P. Rifakes**  
*Antigone C. Rifakes*

**Karl Robinson**  
*Daniel Robinson*

**Tommie C. Rowell**  
*Susan Rowell*

**Linda Ruder**  
*Todd J. Ruder*

**Betsy Russell's Father**  
*Mr. & Mrs. William A. Goldstein*

**Ralph & Katherine Ryan**  
*Cecilia R. D'Acquisto*

**Lora Sanberg**  
*Frederick M. Kaplan*

**Carolyn Schaller**  
*Gregory Gross*

**Ruth Gill Schmitz**  
*Gregory Padgett*

**Jane Schorr**  
*Anne M. Gross*

**Joseph Schwartzbaum**  
*Sally Kehr*

**Shelly**  
*Susan Armstrong*

**Ruth Shuey**  
*Joan Morrison*

**Seymore Simon**  
*Ina R. Simon*

**Leona Skelly**  
*Margie L. Skelly*

**Ruth & Orville Slifer**  
*Mr. & Mrs. David A. Urschel*

**Jake Smiley**

*Julie Morin*

**Michael Smith**

*Diana Marek*

**Rev. Amy Snedeker**

*Carole R. Dizeo*

**Robert Stempel**

*Robert A. Judelson*

**Robert Strain**

*Maryann G. Strain*

**Carl A. Strasser**

*Carol Strasser*

**Arthur R. Stratmeyer**

*Alice J. Stratmeyer*

**David, Jeffrey & Joan Strouse**

*Mr. & Mrs. Daniel J. Wachholz*

**Jeff & Dave Strouse**

*Mr. & Mrs. Daniel C. Foy*

**Joan Strouse**

*Mr. & Mrs. Luke J. Albers*

*Ruth E. Andersen*

*Marilyn S. Arado*

*Carolyn Baird*

*Mary Lourdes Bird & Phil Pekron*

*Mr. & Mrs. Philip J. Boria*

*Mr. & Mrs. Clifford A. Bosworth*

*Robert D. Caldwell*

*Robert Carter*

*Mary & Jack Costello*

*Jeanne E. Davik*

*Mr. & Mrs. Donald D. Ditchman*

*Marjorie Elander*

*Pat Ferrentino*

*Jeanette S. Flaningam*

*Dale Foster*

*Mr. & Mrs. Robert Fritz*

*Mr. & Mrs. Thomas Grittani*

*David & Joyce Haeckel*

*Mr. & Mrs. Sam Hill*

*Jim & Sue Hillman*

*Mr. & Mrs. Edgar W. Holmgren*

*Mr. & Mrs. Michael F. Hughes*

*Janet P. Jaramilla*

*Doris E. Johnson*

*Ned & Jill A. Johnston*

*Mr. & Mrs. Charles D. Laliberte*

*Richard & Adele Lane*

*Marge & Susan A. Leslie*

*Mr. & Mrs. Thomas J. Livorsi*

*Mr. & Mrs. William C. Lyman*

*Mr. & Mrs. Bryan Margner*

*Mr. & Mrs. L. James Margner, Jr.*

*Thomas & Michelle Mason*

*Mr. & Mrs. Timothy M. Mc Dunn*

*Henry & Pat Moughamian*

*Lee P. Murphy*

*Mr. & Mrs. John C. Murray*

*Mr. & Mrs. Frank Mushow*

*Mr. & Mrs. Emil T. Novak*

*The O'Donnell Family*

*Harold Olson*

*Ray & Leah Ostwald*

*Mr. & Mrs. Richard A. Ott*

*Dr. Robert W. Parsons*

*Raquel & Tom Porter*

*Christy Prassas*

*Mr. & Mrs. Leo W. Reedy*

*Mr. & Mrs. Robert P. Reiner*

*Mr. & Mrs. Andrew J. Rosa*

*Patricia Sarhaddi*

*Michael & Amy Season*

*Lee Ann Skogsberg*

*Camilla Streuter*

*Rosario Strouse & Lourdes Strouse*

*Rebecca V. Villanueva*

*Mr. & Mrs. Thomas Wheaton*

**Bill Sullivan**

*Joseph J. Marik, Jr.*

**Warren L. Taylor**

*John A. McElroy*

**Jerry Thomas**

*Cherie Bishop*

*Tom & Sue Terrell*

**Donald L. Thorn**

*Dennis W. Thorn*

**Tika**

*Leo Kim*



**Bill & Emmett Trant**

*Marilyn K. Trant*

**Ruth & Walter Trost**

*Beth & Richard Schowalter*

**Justin Tylman**

*Mr. & Mrs. Raymond A. Macek*

**Jennifer Tzanetopoulos**

*Steve A. Hutchinson*

*Janet A. Nelson*

**Tom Unsworth**

*Jean M. Unsworth*

**Dale T. VanderBloomen**

*Kathy Stathos*

**Benjamin & Jessica Vaughn**

*Patricia W. Vaughn*

**Eugene J. Vaughan**

*Bonnie Keplinger*

**Ellen Warsh**

*Katie Doiel-Tosterud*

**Steve Warsh**

*Katie Doiel-Tosterud*

**Nicole Waters**

*David Paul Alfassa*

**Wesley**

*Mr. & Mrs. William A. Goldstein*

**Julius Wiesenfeld**

*Benjamin Wiesenfeld*

**Joseph P. William**

*Virginia M. Russell*

**Pat Williams**

*Pamela D. Williams*

**Matthew Wolf**

*Thomas A. Wolf*

**Lennie C. Woods**

*Barbara Lenise Woods*

**Mary E. Woods**

*Luke W. Young*

**Wrigley**

*David C. Aumiller*

**Patricia Wyzbinski**

*Virginia Robinson*

**Joseph Yohanan**

*Janice L. Yohanan*

**Kyle Zapinski**

*James M. Zapinski*

**Jeff Zaslow**

*Neil Ira Steinberg*

**Victoria May Zimelis**

*Jane Caseley, MD*

*William E. Nigh*

*Elizabeth Freidheim*

**Wanda Zyzda**

*Eileen M. Castrovillari*

# INDIVIDUALS

## Luminaries

\$25,000+

Anonymous (2)  
Mary & Paul Finnegan  
Anne & Bill Goldstein  
Michael J. Katzenbach  
Alicia & Peter Pond  
Mr. & Mrs. William R. Tobey, Jr.  
Sandra Vitantonio &  
Tilden Cummings, Jr.

## Constellations

\$10,000 - \$24,999

Anonymous (4)  
Patrick L. Albano  
Melanie & John Balzer  
The Bednarz/McMahon  
Family Fund  
David & Nicole Berger  
Maureen & Robert Carson  
Sharon Cole  
Marti Corcoran  
Tom & Julie Danilek  
Matthew W. Dougherty  
Leonard C. Goodman  
Dorothy & Richard Harza  
Carol A. Hogan  
Janice L. Honigberg  
Norman Jeddelloh  
Patricia & Dan Jorndt  
Judelson Family Foundation  
Robert Kohl & Clark Pellett  
Elizabeth & Thomas Maentz  
Laurie B. McCollum &  
Carl W. Warschausky  
Linda & Stephen Patton  
Karen & Dick Pigott  
Dr. & Mrs. Ralph Ryan

## City Lights

\$5,000 - \$9,999

Anonymous (5)  
Patrice & James Andritsos  
Barbara & John Baran  
Blackfriars '57

Carolyn & James Brett  
Lisa A. Centone & Joseph Curci  
Combined Federal Campaign  
Merle R. Cooper  
Dana & Dan Floberg  
Leon Heller  
Ike P. Hong/Hong Family  
Foundation  
Melanee J. Jech  
Rachel Kaplan & Robert Riesman  
Niranjan Karnik  
James & Ozana King  
Breck Kuhnke  
Jim & Kay Mabie  
Herriet & Jim McDonald  
William & Cathleen Osborn  
Holly Ost  
Betsy & Mike Peska  
Denise M. Peterson  
Diana & Bruce Rauner  
Mr. & Mrs. John W. Rowe  
Jenny & Nick Semaca  
Hope & Jeffrey Sheffield  
Matthew D. Smith  
Leonard G. Strauch  
George & Karen Tzanetopoulos  
Bob & Kathy Wiesmann  
Eddie & Pamela Williams

## Guiding Lights

\$1,000 - \$4,999

Anonymous (38)  
Gordon & Paula Addington  
Gina & Mark Affolter  
Scott & Sue Anderson  
Jen & Ben Applegate  
Ermin Arriola  
William T. Barry  
Erica & Michael Battin  
William Beam  
Tom & Siria Behrens  
Mr. & Mrs. Everett J. Bell  
Kate & Aaron Berlin  
Lisa Bertagnoli &  
William Schober

Suzanne Bessette-Smith &  
David K. Smith  
Beth & Gary Birnbaum  
Mr. & Mrs. Harrington Bischof  
Pamela & Michael Bless  
Barbara Bolsen  
Pamela & Paul Boneham  
William O. Bouvel & Fred Grier  
Shawna Bowman  
Beth & Scott Brady  
Mary Brandon  
Timothy Prince Brigham  
Judson & Gabrielle Brooks  
Noah Brown  
Elizabeth D. Buffardi  
Birch & Galen Burghardt  
Joseph E. Byrd & Helen C. Slade  
Linda & Bruce Byus  
Pamella & Al Capitanini  
Roger & Ginny Carlson  
David & Suzanne Causton  
Charleen Cepek  
Barbara Chasnoff &  
J. Thomas Johnson  
Frank B. Chauner  
Emily & John Chen  
Sarah & Tzaras Christon  
Susan & Edward Ciolkosz  
Kristie Clemons & James Markich  
Mr. & Mrs. Lawrence H. Clennon  
John Cole  
Ronald & Carol Cole  
Brian & Margaret Cook  
Rita T. Cooper  
Beth A. Coughlin &  
David D. Wang  
Marybeth N. Cremin at  
Morgan Stanley  
Amanda Crowley & Nick Conway  
Kristi Dahm & Brian Herman  
Cara DeGraff  
Matthew Denman  
Harry Dennis  
Alec T. Dike/ATD & HTD  
Family Fund  
Marisa & Robert Doherty

Lexie & Louis Dore  
Anne-Marie Douglas  
Theresa & Basil Doyle  
Janice & H. Steven Duncan  
Maria Edstrom  
Kerry A. Egan  
Thomas J. Ehlen  
Melanie D. Ehrhart  
Jennifer & Michael Falk  
Randall Fearnow &  
Beth A. Compton  
Sharon Feigon & Steven Bialer  
Joseph Feldman  
Brian & Kathy Fergemann  
Karis Findlan  
Linda & Carl Fisher  
John E. Fitch  
Edward Flood & Hal Kugeler  
Fred & Sarah Flosi  
Janet Fortina  
Colleen & Erik Foster  
Mark A. Fraser  
John & Nancy Furr  
Barbara Jean Geist-Deckert  
William J. Gibbons  
Christopher L. Gillock  
Rebecca C. Gilman &  
Charles Harmon  
Carol & David Golder  
Jill R. Gordon  
Julie Grainge  
Alan & Carol Greene  
Dr. Andrew Griffin &  
Ms. Moira Collins  
Annie Grossman, LCSW &  
Dr. Daniel Wachter  
Brenda & James Grusecki  
Alison & Thomas Hafner  
John & Dana Hagenah  
Paul W. Hamann  
Rita M. Hamann  
Kelly Hansen  
Mark A. Harris  
Nancy & John Hartung  
Mary Ellen Herlihey &  
Paul Worland

Dorrit E. Herreid  
Carrie Hewitt & Adam Shils  
Katie & Dan Hillegass  
Mr. & Mrs. James S. Hogan  
Judith M. Honesty  
Karen T. Horan  
Suzanne J. Hoyes  
Jane Trueheart Huels  
Dick Hurckes  
Eric & Michelle Jacobson  
Carol B. Johnson  
Dr. Harry Johnson  
Louise Moeller Johnson  
Sharon M. Johnson  
Cynthia A. Johnston &  
William M. Kiolbassa  
Laura & Eric Jordahl  
Laurel & Irvin Kaage III  
Mr. & Mrs. Gregory Kaczmarek  
Maria & Joern Kallmeyer  
Frederick M. Kaplan  
Lawrence Kearns  
Alice A. Kelly  
Liz & Steve Kendall  
Bonnie Kepplinger  
Kathleen L. Kerns  
Marion J. Kierscht  
Matilde Kiser  
Deborah & Robert Klipp  
Charles & Joanne Knight  
Frederick M. Kort  
James & Celeste Kramer/  
James Kramer Family  
Charitable Fund  
Susan & Andrew Kramer  
William Kristofek  
Heidi Kruck  
Ruth Krugly & Darryl R. Davidson  
Jacqueline Krump  
Bill & Blair Lawlor  
Lori Lea  
Misun & Alfred Lee  
Mrs. Frederick R. Lent  
Linda & Bob Levin  
Kim & Jim Lifton  
Mike Linder

Laura Lukehart  
 Mary & Chris Lynn  
 Anne & Thomas Lysaught  
 Kilby & William Macfadden  
 Kathleen & Joseph C. Madden  
 James & Mary Jo Margner  
 Ted & Almeda Maynard  
 John F. McCartney  
 Elizabeth McGuire  
 Bruce & Jane McLagan  
 JoAnn Metternich  
 Marc Miller & Chris Horsman  
 Catherine & Leo Miserendino  
 David & Laura Mohr  
 Mary & John Mooney  
 Ed & Marcia Moore  
 Sandra L. Mueller  
 Maryrose T. Murphy  
 Annie & Scott Mygind  
 Mark & Susan Neaman  
 Sonia Nelson  
 Kelsey Neu Wright  
 Sandra K. Newman  
 Mark Niemczyk  
 Kim & John Ogunkeye  
 Frances M. O'Hern  
 Dave Ortman  
 Michael Palmer  
 Ellen L. Partridge  
 Deborah & Rick Paskin  
 Thomas Peppard  
 Hyde & Ann Perce  
 Barbara & Robert P. Perkaus, Jr.  
 Jane Sisco Perkins & Jim Perkins  
 Henry H. Perritt, Jr.  
 Kurt T. Peters &  
 Elizabeth Hopp-Peters  
 Alex Pfister  
 Pam Piane & Calvin Bower  
 John & Sheila Pigott  
 Joseph Podwika  
 Joel & Trisha Pomerenk  
 Jay Porter  
 Andrew Pray  
 Pete & Kim Rauner  
 Janet Reali & Mitchell Cobey  
 Mary Hutchings Reed &  
 Dr. William R. Reed  
 Corrine Reichert

Scott & Mary Reynolds  
 Anthony P. Richards  
 Norman L. Riley  
 David Rittorf & Tim Bruhn  
 Arne R. Rode  
 Ellen Romberg  
 Adam L. Rosenbloom  
 Jono & Piper Rothschild  
 Dale & Leanna Rublaitus  
 Rebecca & David Russo  
 Jill & Allan Ruter  
 Karen T. Santelli  
 Leanne Sardiga & Chris Schluter  
 Andrew Schorr & Cory Fransway  
 Colleen & Dave Seidman  
 Michele A. Semisch  
 Margaret Shaklee &  
 Hillis Howie, Jr.  
 Kelly & Sean Sheridan  
 Willard L. Shonfeld  
 Linda Sienkiewicz  
 Rodrigo & Elizabeth Sierra  
 Debbie & Bernie Simon  
 Elizabeth M. Simpkin &  
 David L. Wetherbee  
 Kathy & Brian Spear  
 Randy Stearns &  
 Stacey Bashara Stearns  
 Sylvia V. Stec  
 Anne & Morton Stern  
 Elizabeth Stovall  
 Rosario Strouse &  
 Lourdes Strouse  
 Colleen Sullivan & Max Nutkowitz  
 Michael B. Susman  
 Ginny Sykes &  
 Jonathan Goldsmith  
 Sven & Julie Sykes  
 Tod Tappert & John Gallagher  
 Sean Taylor & Sian Sutcliffe  
 Andrew Thorrens & Don Mizerk  
 Thomas Thuerer  
 Sharon Tiknis  
 John & Bernice Tulloch  
 Srinivas & Vedavathi Vandanapu  
 Peggy J. Vierk  
 Nancy Vincent  
 Diane & Kurt Vragel  
 Dr. Theodore C. Walters &  
 Michael A. Walters

Loretta & Monroe Walton  
 Jessica & Steve Washburn  
 Jackie & Steve Wasko  
 Bronna Wasserman  
 Judy & David Watt  
 Carrie & Kenneth Jay Weaver  
 Elliot S. Weisenberg  
 Jarrod Welch  
 Wilma E. Wendt  
 Charlotte Whitley & Lee Lohman  
 Benjamin Wiesenfeld  
 Lisa & David Wilcoxon  
 Paul & Laura Williams  
 Mr. & Mrs. Henry D. Wishcamper  
 Jane A. Wolfe  
 Michael & Mary Woolever  
 Delphina Worsley  
 Jennifer Wyatt  
 Shelley Ziack  
 Debbie & Fred Zimmerman  
 Dr. Lawrence &  
 Judith Zimmerman  
 Andrew J. Zych

### Streetlights

**\$500 - \$999**  
 Anonymous (44)  
 Geoffrey A. Anderson/The Ruth  
 and Roger Anderson Family  
 Foundation  
 Jonathan D. Appelbaum  
 Lucy & Peter Ascoli  
 Gregg & Kristin Augustine  
 Diane Austin  
 Virginia Ayers  
 Michael Baran  
 Jack & Beth Barnett  
 Craig Beardsley  
 Perla M. Benrubi  
 Janice L. Benson  
 Jeremy Biles  
 Andrea Billhardt  
 Mary K. Black  
 Arleen & Robert Blatt  
 Zachary Bleicher  
 Sue & Jim Blomberg  
 John P. Blosser  
 Ed & Judy Boduch  
 Frank J. Bornhofen

Stephen S. Bowen  
 Kiantae A. Bowles  
 Sharon K. Bowman  
 Larry A. Braskamp  
 Matthew Brett & Emily Monnelly  
 Giovanna & Joseph Breu  
 Erwin F. Brinkmann  
 Emily & Jon Bristol  
 Patricia & Daniel Buelow  
 Dorothy I. Bultema  
 Mr. & Mrs. Dean L. Buntrock  
 Charles A. Burbridge &  
 Deborah Gillespie  
 John W. & Denise Laria Burns  
 Joellen Burshtan  
 Sandra & Tim Buzard  
 Courtney Calero  
 Donna L. Callahan &  
 Martin J. Fitzgerald  
 Virginia Campbell  
 Russell & Suzanne Champion  
 Kathy Carroll & Dan Schonwald  
 Joan & Dick Chandler  
 Helen Cejtin & Fred Rosen  
 Kathleen Cheevers  
 Linton J. Childs  
 Erin & Michael Cole  
 Sarah M. Collins  
 John P. Corvino  
 John Costello  
 Bruce Cox  
 Rebecca Cox  
 Amy & Samuel Crider  
 Cecilia R. D'Acquisto  
 Susan Davis  
 James Davisson  
 Frederick T. Dearborn  
 Nancy Dehmow  
 Abel P. Del Toral  
 Robert Delaney  
 Paul Dickerson  
 Jane & Chuck Dowding  
 Catherine & James Dudley  
 Sean D. Egan  
 Traci & Scott Eisner  
 Geralyn M. Fallon  
 Michael Fancher  
 Patti & Jerry Fellows  
 Terry & Barbara Ferrari

Michael & Elizabeth Fieweger  
 Drs. Christine M. &  
 Peter R. Fletcher  
 Megan Flood  
 Jill Folan  
 John & Carol Freidheim  
 Susan Fried  
 Daniel & Roxane Friedman  
 Mary Fulton  
 Jack Gallagher  
 Meredith C. George  
 Nicholas L. Giampietro  
 John Glier & Vicki Woodward  
 Angie I. Gomez  
 Ray & Jackie Good  
 Phillip Gordon  
 Robert Gordon & Sophie  
 Haroutunian-Gordon  
 Kenneth Green & Holly Wathan  
 Daniel L. Greiwe  
 Thomas A. Grell  
 Erin L. Grodnick  
 Diane Gunganig  
 Karen Jhain Hafstrom  
 Claire Halpin  
 Brian Hammersley  
 John Harris  
 Edie & Mark Hickman  
 David Hight  
 Gaye Hill & Jeffrey Urbina  
 Robert P. Hineman  
 W. Christian Hinrichs  
 BJ & Kristin Hollowell  
 Brent & Jose Luis Holman-Gomez  
 Pamela K. Hull  
 Melissa Hurley  
 David Hynds  
 John & Lisa Iberle  
 Catherine & Eric Jacobson  
 Susan Janus  
 Randee Jemc  
 Rick & Mary Jobski  
 David H. Joel & Susan Holtzman  
 Michael & Marion Johnson  
 Gail & Ron Kahn  
 Jill & Michael Kaiser  
 Jeremy N. Kaluzna  
 Eleanor Kane  
 Curtis Kelly  
 Edward J. Kennedy

Katherine & Michael Kennedy  
Elizabeth Kimball  
Mr. & Mrs. John A. Kinahan  
Amanda & Ben Kleinman  
Victor Klest  
Mary Klyasheff  
Cathy Koehler  
Amor Kohli  
Keith Krieb  
Dorcas Kresl  
Leslie Kuhagen  
Janine Landow-Esser &  
Jeff Esser  
Hyong Lee  
Matthew Lehman  
Magda Levy  
Janice Liten & Mike Schnur  
Barbara Denmark Long  
Patricia Lucas  
David Mackler  
Madelyn MacMahon  
Charlotte & William Maloney  
James G. Marciniak  
Margaret A. Marek  
Rebeca R. Massey  
Danny & Nikki McBride  
Wendy & Blake McCreight  
Kay W. McCurdy  
John McElroy  
Elizabeth Miller  
Steven Miller  
Ryan Mohr  
Gabriel Moreno  
Rosalynd & Barry Morgen  
R. Cabell Morris  
Lee P. Murphy  
Pat & Jim Nack  
Greg Nagel  
Martha & PJ Nora  
Margaret O'Connor  
Stephen & Deborah O'Connor  
Agnes C. O'Donnell  
Mike O'Gara  
Marguerite O'Hara  
Mr. & Mrs. James Ozinga  
June Maguire Ozmon  
Arthur Palmer & Pamela Gellen  
Tina & Lorenzo Pence  
Roxelyn & Richard Pepper  
Martin Perry & Barbara Williams

David & Kimberly Peterson  
E. Scott Peterson &  
Judith M. Desenis  
Richard Peterson &  
Rev. Wayne Bradley  
Bincy & Jincy Philip  
Bernadine & Edward Pillar  
Michael & Joan Pine  
Thomas W. Planek  
The Pontarelli Children  
Sean Powell  
Christy Prassas  
Stephen Daly Pratt  
Neil A. Pritz &  
Kathleen M. Slomski  
Jenifer Ratcliffe  
Thomas F. Reagan  
John A. Reynolds  
Claire Rice  
Robin & Peter Roberts  
Julia Rohr  
Pam & Paul Rolfes  
Michael Rosenbaum  
Linda & John Rossi  
Mari Roti  
Paul Rudd  
Mary & James Ruff  
Laura & Andrew Running  
Sandra & Earl Rusnak  
Erin Ryan & Ryan Spangler  
Kathleen M. Ryan  
Laura S. Sailer  
Christina Salesberry  
Ronald D. & Joyce A. Salfisberg  
Mr. & Mrs. Dominic Salvino  
Bonnie & Thomas Sampson  
Marian Sassetti-Kend, M.D.  
Jennifer & Stephen Schaefer  
David M. Schiffman  
Karen & Frank Schneider  
Beth & Richard Schowalter  
Beth & Michael Sciallis  
Kandis Scott  
Wesley E. Scroggins  
Nancy & Ralph Segall  
Sharbel Shamoon  
Roshan Shankar  
Gil Shannon, Jr.  
Patricia Shaw  
Barbara Sipe

Mark Skinner  
Dyhan Slaughter  
Neil Smalheiser  
Suzanne T. Smart  
Fred B. Smith  
Janet Carl Smith & Mel Smith  
Mary Ann Smith  
Deborah & John Sobel  
Glen R. Sondag  
Michael & Antje Spade  
Darolyn & Robert Spannuth  
Heidi Sparacino  
Moira & Mitchell Staggs  
Debra L. Stetter  
Kristin & Stan Stevens  
Alan Charles Stout  
Lee Strouse  
Timothy J. Sullivan  
Kay & Cindy Surowiak  
Dr. Mary-Morag Sutherland  
Lara Suvada  
Joann T. Tanaka  
Dee & Ronald Tevonian  
James F. Thaxton  
Michele M. Thompson  
Dennis W. Thorn  
David Thurber & Mary Wolosek  
Kathryn Tierno  
Preston M. Torbert  
George & Laurel Trimarco  
Jon Trowbridge  
David Tucker  
Samantha Tucker-Boyer  
Donna Tuke  
John & Virginia Ulaszek  
Scott J. Vachon  
Cathy Van Alstin  
Lauren Wagner  
Bridget Walsh  
Julie Walton  
Melissa Washington  
Donna & Ronald Webster  
Lesley Weir & Scott R. Swan  
Elizabeth & David Weislogel  
Charity & Lawrence Widrig  
Lance Wilkening  
Dick & Liz Wilmes  
Joann & David Winston  
Howard & Iris Wittenberg  
Susan & Stephen Wolfe

## Lanterns

\$250 - \$499

Anonymous (74)  
Elliot Adams  
Jessica Agin  
Randy & Maria Altmayer  
Daniel T. Amorella  
Eleanor Shoshany Anderson  
Chad W. Andrews  
Erin Archer  
Virginia & Theodore Arey  
Allison & Richard Ashley  
Garold & Petrine Ashley  
The Augustines  
Heidi & Sam Bailey  
Kenneth S. Balaskovits  
Robert A. Barba  
Garry A. Bartelt  
Cora W. Beckom  
Bryan Berend  
Robert M. Berger  
Kay Berkson & Sidney Hollander  
Lieselotte N. Betterman  
Margaret Biddle  
Susan & Stephen Bisgeier  
D. Steven Bishop  
James & Margaret Blair  
Lesley & Spencer Bloch  
Dan & Louise Bockelmann  
Jane M. Bohlin  
Nancy Pond Boostrom  
Marilyn & Philip Boria  
David Borowski  
Wendy Bos  
Maarten Bosland  
Christopher Bowler  
Nancy Bradney & Sam Peltzman  
Robert & Tassie Brautigam  
Noreen Brennan  
Laura & Kenneth Brichetto  
Patricia & Otis Bridges  
Rachel Brody  
Marc Brown  
Harry Bryant  
Ellen Bunton  
Frank Butler  
Kathleen & John Bychowski  
Ann Cady & Gerald Bjurman  
Caryn & Craig Caffarelli  
Cassie Caldwell

Edward J. Calkins  
Collin Callahan  
Helen & Nicholas Camasto  
Mattheis Carley  
Michael Carnow  
Serena A. Carroll  
Ray Bentley Carter  
Jane Caseley, MD  
Paul & Kathy Cepuran  
Suckhee Cha  
Christian Champ  
Amanda Chang  
Dorothea E. Chaveriat  
William T. Chin  
Susan Hollis Clayton  
Jeannine M. Cleary  
Morton Coburn  
Susan & John R. Combes  
John & Anne Conidi  
John & Diane Conway  
Kathleen & Michael Conway  
Carol L. Cory  
Catherine Crino  
Janice & Rick Daitchman  
Cynthia C. Damisch  
Ioana Dan  
Julie & John Danaher  
The Davenportes  
Bertha DePriest  
Gordon R. Denboer  
Joan & Michael Diggs  
Melissa Dinslage  
Bruce H. Doblin  
Michael & Diane Dolesh  
Carolyn Doughty  
Ana Maria L. Downs  
Lian Drago  
Mark A. Dupont  
Susan J. Dwyer-Marshall  
Cheryl Lynn Dykstra  
Barbara J. & Robert M. Edmunds  
Mary Anne Edwards  
Susan Enright-Davis  
Terry & Sam Evans  
Timothy & Julie Farrell  
Fay Ferguson  
Kelly A. Fetzer  
Katherine G. File  
Elaine N. Filus  
Rebekah Fitchett



Thomas G. Fleming  
Sally Fletcher  
Anita Freeman  
Anne & Marcel Frenkel  
Mark Fromm  
Sarah E. Generes  
Alyceson Gillespie  
Allan & Sheila Glass  
Meredith Godoy  
Vivian I. Goeb  
Lila Krasa Schwartz Goldstein  
Susan & Bruce Gottschall  
Herbert & Elizabeth Gould  
Stephen Graessle  
Mary & Richard Gray  
Catherine & Douglas Grimsted  
Mary & Thomas Grittani  
Gregory Gross  
Laura Gross  
Kate Grossman  
James D. Groszek  
Michael Haffler  
Edward & Janice Hamann  
Lewis D. Hamilton  
John & Julie Hansen  
Tom & Nancy Hanson  
Mary Ann Harrington  
Phyllis Glink Harris & Ian Harris  
Margaret S. Hart  
Megan Hart  
Eric Hassel  
Malcom & Adele Hast  
Kimberly Haupin  
Cynthia & Robert Heywood  
Kimberly & Torrence Hinton  
Dorothy J. Hoffner  
Patricia K. Hogan  
Harriet Holderness &  
Jim Luebchow  
James & Wanda Hollensteiner  
Eileen & Eric Holmboe  
Debra & Earle Holmes  
Susan Horn & Donald Honchell  
Beth Horwitz  
Carol E. Hudson  
Sarah & Robert Hutchins  
Michael S. Hyman  
Nancy Isaac

Nathan Jacobs  
Peter & Tamara Jaffe-Notier  
Robert & Beth Ann Janssen  
Iris L. Jeter  
Barbara & Martin Johanson  
John & Nancy Johnson  
Mark A. Johnson  
Phyllis Aileen Johnson  
Bruce & Patricia Jones  
John O. Jones  
Robert H. Jordan, Jr.  
Sibyl R. Josephson  
Richard A. Jurs  
Suzanne & Dan Kanter  
Mary M. Keegan  
Christie A. Keenan  
Mary & Dennis Kelly  
Miriam J. Kelm  
Ann E. Kerbs  
Brian King & Patricia L. DeMarais  
Susan Klawitter  
Connie K. Koenig  
Carey Kogol  
Anthony Kolton  
Sheila Kowalski  
Sandra & Brian Kraimer  
Robert Kravitz/Altura Solutions  
Communication  
Bert & Judy Krueger  
Darrell G. Krueger  
Michele S. Kurlander  
Karen & Larry Kurtzon  
Jane B. La Grassa  
Miriam Patricia Lahey  
Carolyn A. Landwehr  
Martin Laskowski  
William J. Lauck  
Sharon Lawson & David Mangian  
William J. Lechnick  
Jim & Susanne Lenz  
Gerrie Liaw  
Tony & Carol Libel  
Mary Lichter  
Teresa Lindem  
Rachelle & Steve Lindo  
Jane D. Lippow  
Marcia & Joe Liss  
Andrew Phillip Loehrer

Ruth Lynch  
Carol & Ben Mackoff  
Paul Marengo & Joan Simmons  
MacKenzie Martin  
Annamae Calkins Martinez  
William J. Martinez  
Mary P. Massery  
Cecil Matthews  
Susanne Mathewson  
Hugh G. McBreen  
James P. McCaffrey  
Margaret McCamant  
Brian McCormick  
Marnie McHale  
Bozena & John McLees  
Anne Marie McMichael  
Marcelle McVay & Dennis Zacek  
Tracy Meredith  
Graham Meyer  
Georgiana Micholas  
Karen Mirante  
Suzanne Mizgata  
Diana & David Moore  
Diane & James Moore  
Oscar Moore, Jr.  
Jennifer R. Moran  
Maria Moret  
John & Naomi Morris  
Gregg & Betty Morton  
Barbara Mousigian  
Stacey Murphy  
Irving Naiditch  
Kathleen & Dominic Nakis  
Janet A. Nelson  
Stephen Nelson  
Joanne Nemerovski  
Marjorie K. Newpher  
Pauline Nolte  
Candace L. Nowak  
Matthew O'Brien  
Susan S. Obuchowski  
Julie M. O'Hern  
Kim Olsen-Clark & Ian Clark  
Cathryn O'Malley  
Sarah R. Packard  
Dominic & Nancy Palazzolo  
Doris & Stephan Palmie  
Mary & Terry Pasquale, Jr.

Martha & Jeffrey Pattee  
Helen Pavia  
Christopher Pena  
Tedd Peso  
Joy L. Peters  
Jessica Petty & Ethan Smith  
Elizabeth Baldwin Phillips  
Carol & Hadley Pihl  
Kristen & Stephen Pillsbury  
Georgette Pliml  
Debra Pogrund Stark &  
Jessica M. Choplin  
Helen Poot & Michael Mattson  
Ginger Powell  
Sheila Prendergast  
Nina Pulliam  
William J. Quinlan  
Robert & Delores Radloff  
Steven L. Raglin  
Johanna Raimond  
Katherine & Michael Raleigh  
Victor E. Ramos  
Daniel R. Raudonis  
Emma C. Redmond  
Mary E. Reynolds  
Mary Louise Carter Rhodes  
Mr. & Mrs. David W. Riddell  
Caroline A. Roberts  
Dayle Roberts  
Daniel Robinson  
Virginia Robinson  
John Rooney-Altgeld  
Anthony & Jane Rothschild  
Mark Rusiewski  
Susan Rusk  
Delores Marks Ruth  
James Ryan  
Sue & Jeff Ryan  
Suzanne R. Sawada &  
Leonard S. Joy  
Meg C. Schaul & Steve Stormo  
Matt Schenek  
Travis Schmitz & Jason Givan  
Mr. & Mrs. William N. Setterstrom  
Pat Sharkey & John Markowski  
Barbara Shaw  
Timothy C. Sherck  
Kevin Sido

Loren Y. Simmons  
Arlie Sims  
Emily Sipfle  
Bridget Somine  
Faith H. Spencer  
Donald Spetter  
Paul & Janice Springborn  
Martin & Rebecca Staehlin  
Christopher R. Stein  
Ginger Stevenson  
James Strait & Janina Levy  
Eric Strickland  
George F. Sutherland  
Becky Sutton  
Patricia K. Swanson  
Shirley A. Taylor  
Alexander Terras  
Steve Thayer  
David Tichy  
Mary A. Tierney  
Pamela Meier Tingley  
Richard & Marietta Toft  
Swanette Triem  
Richard E. Trueheart  
Richard B. Turner  
Thomas Tyndorf  
Jeanette R. Uhlmann  
Nneka Umeh & Griffin Moshier  
Susan & William Vanderberg  
Kathleen Vito  
John C. & Margaret S. Walden  
Family Fund/The Chicago  
Community Foundation  
Christopher Walker  
Ann C. Wallis & Tom Whitehead  
Vicki L. Weyhrich &  
Darrell Splithoff  
Valerie B. Wiley  
Sarah Winek  
Thomas R. Witt  
A. Virginia Witucke  
Jean & Coleman Woodhouse, Jr.  
Barbara Lenise Woods  
Benjamin Worrel  
H. Edward Wynn  
Kayla J. Yurick  
Julie, Emily & Bob Zaideman  
Guy Zakrzewski

## LONG TIME FRIENDS

(First Gift Before 7/1/2003 and Last Gift After 7/1/2017)

Anonymous (161)  
Katherine Acles  
Steven G. Adams  
Gordon & Paula Addington  
Toni L. Aiello  
Barbara & Kenneth Alexander  
David Paul Alfassa  
James & Gretchen Allen  
Saverio & Judy Alonzi  
Jill Althage  
John V. Amato  
Seymour R. Angert  
David A. Arnold  
Lucy & Peter Ascoli  
Garold & Petrine Ashley  
Theodore & Barbara Asner  
Carol & Franklin Augustine  
Ann Ayres  
Doris Ayres & Les Teichner  
Glen Bacus  
Pamela R. Baker  
H. Russell Barefield &  
Robert A. Mahoney  
David Barford  
Jack & Beth Barnett  
Ruth E. Barrios  
Patsy & Charles Barrow  
Lynda M. Bartlett  
Donna & William Baumgardt  
Barbara E. Baumhardt  
Tom & Siria Behrens  
Ann Beland  
Gary & Mary Berens  
Barbara S. Berg  
David & Nicole Berger  
Charles S. Bergh  
Sandra L. Berliant  
Elaine Bernabe  
James M. & Jean K. Berry  
Victoria Lee Bigelow  
D. Steven Bishop  
Timuel D. Black  
Maureen Blaha  
Julian M. Blumenthal  
Nancy Bohlin  
Beverly Bojanowski

Albert H. Bolger  
Barbara Bolsen  
William & Beverly Bolsen  
Pat & Steve Borcik  
Steven & Ifaat Bosse  
Richard Bough &  
David Easterbrook  
Anne Bowhay  
Wayne, Karen & Christie Boyles  
Sheila Brady  
James & Nancy Brandt  
Frances F. Brantley  
Laura & Kenneth Brichetto  
Aaron D. Brodsky  
Sharon Buchman  
Maree G. Bullock/  
The Alford Group  
Charles A. Burbridge &  
Deborah Gillespie  
Shirley A. Calahan  
Frank Caldarone  
Robert & Jane Calvin  
Leonard Canino  
Michael D. Carey  
Roy W. Carlson  
David & Julia Carpentier  
Joseph & Joanne Carroll  
Thomas & Judith Carson  
Ronald P. Centanni  
Paul & Kathy Cepuran  
Marilyn M. Challand  
Miriam Chaplik  
J. Harley & Jean B. Chapman  
Barbara Chasnoff &  
J. Thomas Johnson  
Frank B. Chauner  
Emily & John Chen  
Elaine & Douglas Chester  
Karla K. Chew  
Nancy & Dudley Childress  
Lois J. Christoffersen  
Russ & Nan Clark  
Kristine Cloud  
Morton Coburn  
Bettie J. Coffey  
Ronald & Carol Cole

Stephen & Jane Coley  
Fred Conrad  
John & Diane Conway  
Kathleen & Michael Conway  
John H. Cooper  
Merle R. Cooper  
Rita T. Cooper  
James R. Creath  
Catherine Crino  
Janice & Rick Daitchman  
Priscilla M. Daley  
Sanjna Das  
Ruth & Charles Daugherty  
Randall Davies  
Michael Davis  
David DeVries  
Robert Delaney  
Mac Detmer  
Cathleen C. & David Dixon

Susan Dominik  
Kathy & Mike Donaldson  
Kenneth M. Doody  
Anne-Marie Douglas  
Liz & Stephen Downes  
Diane R. Drever  
Beth Drost  
Margerie Dubois  
Jacqueline J. Dupon  
Mark A. Dupont  
Barbara B. Durand  
Marianne Bordeaux Eberhardt  
Mary Anne Edwards  
Melanie D. Ehrhart  
Robert & Mary Ann Eichhorn  
James & Kathleen Ekeberg  
Mr. & Mrs. William L. Ekvall  
Karen Ellwood  
Susan Enright-Davis

Kirby Epley  
Paul L. Epner &  
Janet Gans Epner  
Tina M. Erickson & Mike Krutsch  
William & Mary Escudier  
Barbara A. Esposito  
Pat Evans  
Jerry & Natalie Fafendyk  
Mary E. Farwell  
Loretta M. Feldman  
Patti & Jerry Fellows  
Toni & Joel Fenchel  
Linda & Carl Fisher  
Fred & Sarah Flosi  
Norma J. Flynn  
Elizabeth K. Fox  
Richard & Marguerite Franklin  
Sylvia Franklin  
Marilyn & Marc Franson



John & Carol Freidheim  
 Elaine Frick  
 Daniel & Roxane Friedman  
 Mary Fulton  
 Jack Gallagher  
 Clyde Galow  
 Dileep Gangolli  
 Colleen P. Garard-Dahlem  
 Shirley Garland  
 Jan & Dave Gerber  
 Michael Gill  
 Mary Joan Gilmour  
 Sam J. Giovenco  
 Allan & Sheila Glass  
 Ethel C. Gofen  
 Florence L. Goldsmith  
 Anne & Bill Goldstein  
 Robert Gordon &  
 Sophie Haroutunian-Gordon  
 Eve M. Gorman  
 Susan & Bruce Gottschall  
 Anthony S. Graefe  
 Jack Graff  
 Jerry D. Grant  
 Mary & Richard Gray  
 John & Judi Gretz  
 Dr. Andrew Griffin &  
 Ms. Moira Collins  
 Susan Griffith  
 Catherine & Douglas Grimsted  
 Norman & Linda Groetzinger  
 Kenneth & Kathleen Groh  
 Dorothy Grossman  
 Brenda & James Grusecki  
 Louise Hacker  
 Kathleen E. Hackett  
 John & Dana Hagenah  
 Robert J. Haligas  
 Kathryn Hall  
 Jack & Beverly Halvorsen  
 Paul W. Hamann  
 Rita M. Hamann  
 Beatrice A. Hammond  
 Tom & Nancy Hanson  
 Robin Hardaway  
 Warner J. Harris  
 Patricia J. Haupt  
 Lois & Martin Hauselman  
 Laurencella Hawkins  
 Kristine M. Healy

James H. Heard  
 Kurt & Gayle Hedlund  
 David A. & Mary Alice S. Helms  
 Dale & Gloria Henderson  
 Russell & Lisa Henning  
 Richard Herman  
 Jane Heron  
 Dorrit E. Herreid  
 Katherine & Frederic Hickman  
 Henry Hill  
 James & Margot Hinchliff  
 Robert Hinchliff  
 Benjamin Ho  
 Sarah A. Hoban  
 Rev. John Hoffman  
 Sarai Hoffman & Stephen T. Pratt  
 Valerie Hoffman-Hatcher  
 Harriet Holderness &  
 Jim Luebchow  
 Norman & Barbara Hollenberg  
 James & Wanda Hollensteiner  
 Dave & Joanne Hood  
 Rev. Gloria G. Hopewell  
 Karen T. Horan  
 Norma B. Hoza  
 Jane Trueheart Huels  
 Michael & Ellen Hughes  
 Susan B. Humphrey  
 Dick Hurckes  
 Margaret Hutchings  
 Sarah & Robert Hutchins  
 Karen E. Ingalls  
 Peter & Tamara Jaffe-Notier  
 Theresa Janczy  
 Robert & Beth Ann Janssen  
 Susan Janus  
 Mary Ann Jareczek  
 Nancy H. Jarvinen  
 Geri Jarzombek  
 David H. Joel & Susan Holtzman  
 Mr. & Mrs. Carl Johanson, Jr.  
 George & Joan Johnson  
 John & Nancy Johnson  
 Maria & David Johnson  
 Sharon M. Johnson  
 John O. Jones  
 Paul E. Jurewicz  
 Richard A. Jurs  
 Mr. & Mrs. Gregory Kaczmarek  
 Francis & Catherine Kaihatsu

Frederick M. Kaplan  
 Matthew J. Keller, Jr.  
 Curtis Kelly  
 Katherine A. Kent  
 Marion J. Kierscht  
 Michael J. Kiley  
 Renee A. Klak  
 Kurt Kloeckner  
 Ken Knauf  
 Rev. Eddie & Mrs. Linda Knox, Jr.  
 Jan Kodner  
 Robert Kohl & Clark Pellett  
 Rita Kolkowski  
 ArieH Konigl  
 Janet & Henry Konkel  
 Susan H. Kosinski  
 Christina Kozich  
 Lynda & Charles Kraemer  
 Michael Kretch  
 William Kristofek  
 Bert & Judy Krueger  
 Jacqueline Krump  
 William & Kathryn Ksander  
 John & Deborah Kurth  
 Marie Kuzniarek  
 Amy LaBan  
 Marti & George Lannert  
 Robert & Carleene Laskero  
 Gerard & Alice Latus  
 Robert Lau  
 Mary B. Lavelle  
 Bill & Blair Lawlor  
 Carl A. Lekan  
 Rick Lenell  
 Mrs. Frederick R. Lent  
 Nancy B. Leonard  
 Richard Lewis  
 James & Debra Lindsay  
 Allan J. Lindrup  
 Janice Liten & Mike Schnur  
 Stephen & Rhonda Little  
 Ray & Mary Lopata  
 Robert J. Lucas  
 Maureen & Theodore Lucore  
 Traci Lumberg  
 Susan Lutz  
 Jim & Kay Mabie  
 John & Bette MacLennan  
 Kathleen & Joseph C. Madden  
 Jacqueline & Alec Magafas



Josephine Mago  
 Anne & Robert Mair  
 Richard M. Majko  
 Charles V. Maloney  
 Jane E. Marquard  
 Therese A. Marske  
 Glenn & Kathleen Martin  
 Steve Martin  
 Diane L. Martling  
 John & Mary Marusek  
 Andrew & Kelly Masse  
 Susan F. Maul  
 Karen V. Maurer  
 Sam Mauro  
 Eva B. Mayer  
 Nancy Mayer  
 Ted & Almeda Maynard  
 Thomas & Mary Ann Mazukelli

Charlaine McAnany  
 Michael & Jane McCarthy  
 Bonnie & Jim McColl  
 Laurie B. McCollum &  
 Carl W. Warschausky  
 Susan & Beth McConnell  
 Geri McCormick  
 Paula J. McCracken  
 Kay W. McCurdy  
 John McElroy  
 Marnie McHale  
 Marguerite Savard McKenna  
 Kevin McKeough  
 Bruce & Jane McLagan  
 Bozena & John McLees  
 Lynette R. McNeal  
 Marcelle McVay & Dennis Zacek  
 Claretta Meier

David & Patti Melzer  
 Sally & Phil Meno  
 JoAnn Metternich  
 Maura Miller  
 Ed & Marcia Moore  
 Oscar Moore, Jr.  
 Anne D. Morgan  
 John & Naomi Morris  
 Gregg & Betty Morton  
 Jim Motzer  
 Mary C. Mulcrone  
 Geoffrey & Karyn Murphy  
 Monica Murtha  
 Paul & Nancy Nabor  
 Carolyn Nash  
 Stephen D. Nechtow  
 Sandra K. Newman  
 Mrs. LaVerne A. Nichols  
 Lawrence R. Nicholson  
 Margaret & Edward Niimi  
 William & Judith Noelle  
 Marilyn Noettl  
 Rita M. Novak  
 Karen & Justin O'Brien  
 Robin Winter Odem  
 Everett & Elizabeth Ortiz  
 William & Cathleen Osborn  
 Ronald & Linda Osikowicz  
 Richard A. Ott  
 Darryl Overstreet  
 Helen J. Owens  
 Catherine Painter  
 Arthur Palmer & Pamela Gellen  
 Joan M. Palmer  
 Amy Kosnar Parker  
 Helen Pavia  
 Anita M. Pellettiere  
 Richard S. Penner  
 Roxelyn & Richard Pepper  
 Elaine & Russell Peppers  
 Martin Perry & Barbara Williams  
 Joy L. Peters  
 Patricia Anne Petersen  
 David & Claudette Peterson  
 E. Scott Peterson &  
 Judith M. Desenis  
 Richard Peterson &  
 Rev. Wayne Bradley  
 Robert Pfutzenreuter  
 Elizabeth Baldwin Phillips

John & Sheila Pigott  
 Karen & Dick Pigott  
 Carol & Hadley Pihl  
 Michael & Joan Pine  
 Richard P. Poethig  
 Lee T. Polk  
 Anne F. Pollock  
 The Pontarelli Children  
 King & Hope Poor  
 Robert & Joan Pope  
 Gwen Potucek  
 Christy Prassas  
 Marc Primack  
 Ken Printen  
 Michael & Virginia Prisco  
 Nancy Quinn  
 Steven R. Radtke  
 Elizabeth L. Raiman  
 Angelina E. Ramirez  
 Jon Rasmussen  
 James & Hildegund Ratcliffe  
 Jeffrey G. Reber  
 Clarence Reding  
 Robert Reeb  
 David & Sydney Reed  
 Frances S. Reedy  
 Corrine Reichert  
 Maryse Richards &  
 Brandon Taylor  
 Ann T. Richter  
 Dr. Edward O. Riley  
 Gerald Rizzer  
 Darlene & Rick Roberts  
 Daniel Robinson  
 Warner A. Rosenthal  
 Rob & Susan B. Ross  
 Mr. & Mrs. John W. Rowe  
 Andrew D. Rowlas  
 Beth Rubel  
 John Rushford  
 Virginia M. Russell  
 Alan Saleski  
 Ronald D. & Joyce A. Salfsberg  
 Joseph C. Salvato  
 Alan Sanchez  
 Karen T. Santelli  
 Christine E. Savaiano-Bach  
 Karen & Frank Schneider  
 Dorothy Schreiner  
 Jean G. Schuessler

Arlene D. Schultz  
 Catherine & Paul Schultz  
 Dennis M. Schwank  
 Terry Schy  
 Mary Sebahar & William Clary  
 Jennifer E. Seidelman  
 Charles Sennet  
 Mr. & Mrs. William N. Setterstrom  
 Margaret Shaklee & Hillis Howie, Jr.  
 Leah Ann Shapiro  
 Phillip Shayne  
 Donald Sheber &  
 David Wywialowski  
 Timothy C. Sherck  
 Nancy Shortino  
 The Sidan Family  
 William Signer  
 Eugene & Patricia Sikorovsky  
 Elizabeth M. Simpkin &  
 David L. Wetherbee  
 Dick Simpson  
 Patricia L. Skalka  
 Suzanne T. Smart  
 Barry Smith  
 Bruce L. Smith  
 Matthew D. Smith  
 Rev. Thomas G. Smith, C.P.A.  
 Tom Smith &  
 Susan Bradford-Smith  
 Donald & Virginia Sorensen  
 Mary Ann Sorokie  
 Marguerite & Stephen Spangehl  
 Darolyn & Robert Spannuth  
 Susan C. Spengler  
 Arthur Spooner &  
 Sharon Watts-Spooner  
 Paul & Janice Springborn  
 Charles & Joan Staples  
 Randy Stearns &  
 Stacey Bashara Stearns  
 Sylvia V. Stec  
 Kurt & Patricia Steele  
 Daniel R. Steiner  
 Julia C. Stepp  
 George & Linda Stevenson  
 Mr. & Mrs. H. T. Stowell  
 Maryann G. Strain  
 James Strait & Janina Levy  
 Carol Strasser  
 Arthur & Alice Stratemeyer

Leonard G. Strauch  
 Eric Strickland  
 Daniel & Elizabeth Sullivan  
 James P. Sullivan  
 John & Margaret Sundlof  
 Becky Sutton  
 Tom Swanson &  
 Jo-Ellyn Dorsey Swanson  
 Gerard A. Swick  
 Ginny Sykes &  
 Jonathan Goldsmith  
 Sven & Julie Sykes  
 Dorothy T. Tannenbaum  
 Tod Tappert & John Gallagher  
 A. Robert & Barbara Taylor  
 Marguerite B. Thompson  
 Frank & Nina Thorp  
 David Thurber & Mary Wolosek  
 Mary A. Tierney  
 Pamela Meier Tingley  
 Mr. & Mrs. William R. Tobey, Jr.  
 Richard & Marietta Toft  
 William & Christine Tompsett  
 Michael W. Toney  
 Swanette Triem  
 Richard E. Trueheart  
 Thomas G. & Marianne C. Turnbull  
 Anne M. Vekich  
 Nancy Vincent  
 Barbara Voorhees  
 Carol Kyros Walker

Herschel & Gale Wallace  
 John J. Walsh  
 Jennifer E. Ward  
 Barbara A. Warren  
 Phyllis Warsen  
 Mr. Peter &  
 Dr. Margaret Watt-Morse  
 Janice Weathington  
 Norman & Harriet Wechter  
 Wilma E. Wendt  
 Charles Werner  
 James G. Wilcox  
 Linda & Payson S. Wild, Jr.  
 Diane Williams  
 R. Bruce Williams  
 Mildred D. Willis  
 James D. Wiltshire, Jr.  
 Mrs. Hertha M. Wisdom  
 Alain & Barbara Wood-Prince  
 Michael & Mary Woolever  
 Jane Stroud Wright  
 Sandra Wrtjak  
 Rev. Phil & Sharon Yetter  
 Julie Yocom  
 Lisa B. Yondorf  
 Curtis & Deborah Yoshizumi  
 Jeanie Kendall Young  
 Trudi Zbinden  
 Steve A. Ziemblicki  
 Dr. Lawrence & Judith  
 Zimmerman



# IN KIND DONATIONS

## Congregations

Acacia Park Evangelical Lutheran Church, Norridge  
 Augusta Lutheran Church, Hobart  
 Beth Hillel Congregation, Wilmette  
 Beth Tikvah Congregation, Hoffman Estates  
 Bethany United Church of Christ, Chicago  
 Carter-Westminster United Presbyterian Church, Skokie  
 Christ Church of Chicago, UCC  
 Christ the King Catholic Church, Chicago  
 Christian Church of Arlington Heights  
 Church of Jesus Christ of Latter-day Saints, Oak Park  
 Church of the Transfiguration, Palos Park  
 Congregation Hakafa, Glencoe  
 Congregational Church of Jefferson Park, Chicago  
 Congregational UCC of St. Charles  
 Covenant United Church of Christ, South Holland  
 Edison Park Lutheran Church, Chicago  
 Edgebrook Community Church, Chicago  
 Epiphany Lutheran Church, Elmhurst  
 Epiphany United Church of Christ, Chicago  
 First Congregational Church of Glen Ellyn  
 First Congregational Church of Western Springs  
 First Congregational Church UCC, Des Plaines  
 First Congregational United Church of Christ, Naperville  
 First Presbyterian Church of Arlington Heights  
 First Presbyterian Church of Deerfield

First Presbyterian Church of Wilmette  
 First United Methodist Church, Evanston  
 First United Methodist Church of Park Ridge  
 Friendship Presbyterian Church, Chicago  
 Glencoe Community Garden/ Am Shalom  
 Glencoe Union Church  
 Glenview Community Church  
 Glenview United Methodist Church  
 Gloria Dei Lutheran Church, Downers Grove  
 Greater Faith Ministries International, Chicago  
 Hillel at Loyola, Chicago  
 Holy Covenant Metropolitan Community Church, Brookfield  
 Holy Family Church, Chicago  
 Holy Trinity Lutheran Church, Glenview  
 Immaculate Conception Church, Chicago  
 Ivanhoe Congregational Church, Mundelein  
 Lake Street Church, Evanston  
 Lakeview Presbyterian Church, Chicago  
 Living Christ Lutheran Church, Hanover Park  
 Lutheran Church of the Ascension, Northfield  
 Lutheran Church of the Good Shepherd, Prospect Heights  
 Mary Seat of Wisdom Parish, Park Ridge  
 Mercy Gate International, Palos Heights  
 Morton Grove Community Church  
 New Hope United Methodist Church, Chicago  
 Northminster Presbyterian Church, Evanston  
 Old St. Patrick's Church, Chicago

Our Lady of Perpetual Help, Glenview  
 Our Lady of Ransom, Niles  
 Park Ridge Presbyterian Church  
 Pilgrim Lutheran Church and School, Chicago  
 Prince of Peace, Elk Grove Village  
 Queen of All Saints Basilica, Chicago  
 Ravenswood Fellowship United Methodist Church, Chicago  
 Ravenswood United Church of Christ, Chicago  
 Resurrection Lutheran Church, Chicago  
 Missio Dei Wrigleyville  
 Roselle United Methodist Church  
 Second Unitarian Church of Chicago  
 Seventh Presbyterian Church, Chicago  
 Silverstein Base Hillel, Metro Chicago Hillel  
 Southminster Presbyterian Church, Arlington Heights  
 St. Alphonsus Church, Chicago  
 St. Andrew Greek Orthodox Church, Chicago  
 St. Bonaventure Church, Chicago  
 St. Celestine Church, Elmwood Park  
 St. Chrysostom's Episcopal Church, Chicago  
 St. Clement Church, Chicago  
 St. Genevieve Catholic Council of Women Ministry, Chicago  
 St. George Catholic Church, Tinley Park  
 St. Isaac Jogues Catholic Church, Niles  
 St. John Brebeuf Parish, Niles  
 St. John UCC, Arlington Heights  
 St. John United Church of Christ, Evanston  
 St. John's Evangelical Lutheran Church, Wilmette

St. John's United Church of Christ, Mokena  
 St. Martin de Porres Catholic Church, Chicago  
 St. Mary's Episcopal Church, Park Ridge  
 St. Paul Lutheran Church, Skokie  
 St. Pauls United Church of Christ, Chicago  
 St. Peter United Church of Christ, Lake Zurich  
 St. Peter's United Church of Christ, Skokie  
 St. Raymond de Penafort Parish, Mount Prospect  
 St. Teresa of Avila Catholic Church, Chicago  
 St. Vincent de Paul Society of St. Gregory, Chicago  
 Stratford Christian Center Church  
 Sts. Faith, Hope and Charity, Winnetka  
 The Lighthouse Church, Alsip  
 The Lighthouse Church of Chicago  
 The Presbyterian Church of Palatine  
 Trinity Lutheran Church, Warrenville  
 Trinity United Methodist Church, Mount Prospect  
 Union Church of Hinsdale  
 Urban Village Church, Chicago  
 Wicker Park Lutheran Church, Chicago  
 Winnetka Congregational Church  
 Women of the Evangelical Lutheran Church of America, Chicago  
 Women's Association of Glenview Community Church

## Foundations, Corporations, Government, Schools & Community Groups

A. Estrada Inc.  
 A. N. Pritzker School, Chicago  
 A Red Orchid Theatre  
 ABA Section of Legal Education  
 ADP, Elk Grove  
 Aegis Compliance & Ethics Center, LLP  
 AIRBNB  
 All Travel Sizes  
 Amazing Chicago Funhouse Maze  
 American Medical Association  
 Andie's Restaurant  
 Antique Taco  
 Arlington International Racecourse  
 Arpin Strong - Arpin Group  
 Beaubien Elementary School, Chicago  
 Beer Church Brewing Co.  
 Big City Swing  
 Black Ensemble Theater  
 Blackbird Gallery + Framing  
 Blackwood BBQ  
 Blaum Bros. Distilling Co.  
 Bloom n Toss & Whole Foods Market Sauganash  
 Blue Cross & Blue Shield of Illinois  
 Boeuffhaus  
 Boka Restaurant Group  
 Bottleneck Management  
 Boy Scout Troop 965  
 Br. David Darst Center  
 Bubbles Academy  
 Buffalo Grove Garden Club  
 Capital One Cafe  
 Capital One Chicago Origins  
 Celtic Chicago, Inc.  
 Center for Asian Health Equity - Asian Health Coalition  
 Central School Service Club, Glencoe  
 CH Distillery

Chalet Nursery  
Chicago Botanic Garden  
Chicago Children's Theatre  
Chicago Distilling Company  
Chicago Fire/Chicago PD/  
Chicago Med  
Chicago History Museum  
Chicago Jewish Day School  
Chicago Leather Community  
Outreach  
Chicago Period Project  
Chicago Shakespeare Theater  
Chicago Sinfonietta  
Chicago Stagehand  
Chicago Symphony Orchestra  
Chicago White Sox Community  
Fund, a McCormick  
Foundation Fund  
Chicago Windy City Lions Club  
Chicago Wolves  
Chicago's Pizza  
Christy Webber Landscapes  
Cirque du Soleil  
Coda di Volpe  
ComEd, An Exelon Company  
ComedySportz Theatre  
Comfy & Chic Boutique  
Connections for the Homeless  
Constellation Brands, Inc.  
Cooper's Hawk Winery &  
Restaurant  
CorePower Yoga  
Cosmic Bikes  
Costco Wholesale  
Court Theatre  
Cub Scout Pack 3957  
Cubs Care, a McCormick  
Foundation Fund  
Cumin  
Cygnus Business Media  
D4 Irish Pub  
Dark Matter Coffee  
Davis Theatre  
Daisy Troop #25403/  
Carly Vollertsen  
Deer Path Inn  
Delta Chi IHQ  
DePaul University  
DeSoto House Hotel  
DHR International

Dinkel's Bakery  
Dovetail Brewery  
Drury Lane Theatre  
East Bank Club  
Edgebrook Woman's Club  
Edgewater Woman's Club  
Elizabeth Restaurant  
Elmhurst College Residence Hall  
Association  
Entercom Chicago (93WXRT)  
Escape Artistry  
Fireside Restaurant and Lounge  
Four40 Tenants  
Frances Xavier Warde School,  
Chicago  
Francesca's Restaurant Group  
From Our Ashes/W.O.W. Sorority  
Gage Hospitality Group  
Gene & Georgetti  
Gene Siskel Film Center  
George's Ice Cream & Sweets  
Gibsons Restaurant Group  
Glenbrook South High School  
Glencoe Park District  
Global Tax Network US, LLC  
Goodman Theatre  
Grand Lux Cafe  
Grainger Online Merchandising  
Granite City Food & Brewery, LTD  
GroundTruth  
Groupon  
Hair Cuttery / Ratner Companies  
Half Acre Beer Company  
Hamilton Elementary School,  
Chicago  
Hansen-Furnas Foundation, Inc./  
Kirsten & Brian Barkley  
Harbor Capital Advisors, Inc.  
Harris Theater for Music and Dance  
Heal Veterinary Clinic  
Heartland Human Care - Refugee  
and Imigrant Community  
Services  
Honey Butter Fried Chicken  
Hotel Indigo Chicago  
Hotel Zachary  
Hubbard Street Dance Chicago  
Hubbard Woods School, Winnetka  
Hugo Ball / smartbar  
Hutch Bistro

I-CERV  
Ill Forks Steakhouse  
IMC Chicago Charitable Foundation  
Infant, Inc.  
International Children's Media  
Center  
Jack and Jill of America -  
Western Cook County  
Chapter  
James B. McPherson Elementary  
School, Chicago  
Jewish Child and Family Services  
Jewish United Fund of  
Metropolitan Chicago  
Johnson & Bell, Ltd.  
Jones Day  
Jonnie's Angels Foundation  
Juno  
JW Marriott Chicago Hotel  
kaléo  
Kappa Alumnae Association  
Kendra Scott  
Ketchum  
Kimpton Journeyman  
Kings Bowl America  
Kingston Mines  
Kitsune  
Kohl Children's Museum of  
Greater Chicago  
Kuma's Corner  
La petite folie  
La Storia Ristorante  
Lane Tech College Prep High  
School  
Latin School of Chicago  
Laugh Factory Chicago  
Leland Associates, LLC  
Lesbian and Gay Bar Assoc. of  
Chicago (LAGBAC)  
Levy Restaurants/River Roast  
Libertarian Party of Chicago  
Lifeline Theatre  
Lillstreet Art Center  
Limered Studio  
LinkedIn  
Little Beans Cafe  
Loews Chicago Hotel  
Lookingglass Theatre Company  
Lou Malnati's Pizzeria, Malnati  
Organization

Lucky Strike  
Lynfred Winery, Inc.  
Major, Lindsey & Africa  
Maple & Ash  
Mariano's  
McDonald's Corporation  
Metea Valley High School  
Metropolis Performing Arts Centre  
Mother McAuley Liberal Arts  
High School  
Munster Restaurant Group  
Music Box Theatre, Chicago  
Music of the Baroque  
National Corporate Housing  
Newberry Academy  
Nielsen  
Niles Township District for  
Special Education  
Niles West DECA  
Niles West High School  
Northlight Theatre  
Northwestern University  
Graduate Housing Assistants  
Old Town Social  
Omnicom Media Group  
One Off Hospitality Group, LTD  
O'Shaughnessy's Public House  
Pack 936 Cub Scouts, Munster  
Palomar Chicago -  
A Kimpton Hotel  
Pan American Bank & Trust  
Park Grill  
Peggy Notebaert Nature Museum  
Penserra/George Martin  
Peoples Gas  
PepsiCo Quaker Good Purpose  
Team  
PFLAG Hinsdale Chapter  
Phi Sigma Sigma Zeta Tau,  
Loyola University Chicago  
Pickles Playroom & Salon  
Pinstripes  
Pitchfork Music Festival  
Plato Academy  
Plus Relocation  
Potbelly, Streeterville  
Practical Angle Picture Framing  
PROXI  
Purple Monkey Playroom  
Quincy Street Distillery

Rada's Showroom  
Radio Flyer  
Ravinia  
Regroup Therapy  
Revolution Brewing  
Ridgewood High School,  
Woodridge  
Rivendell Theatre Ensemble  
Road Runner Sports  
Roeser's Bakery  
Roosevelt University  
Roxy & Lola  
Rush University Medical Center  
Saint Andrew Girl Scout  
Troop 20073  
sales-i  
Sanders Fine Portraits  
Sapient Razorfish  
Schneider Transportation  
Management  
School of Rock, Highwood  
Sears Holdings Corporation  
Senior Citizens of the Sixty Plus  
Club  
Shedd Aquarium  
Silberstein & Gilbert Orthodontics  
Simone's Bar  
Southwest Airlines Co.  
Spacca Napoli Pizzeria  
Split-Rail  
Spotify  
St. Cyprian School, River Grove  
Steel Beam Theatre  
Steep Theatre Comoany  
Steppenwolf Theatre Company  
Stuart Rodgers Photography  
Stu's Stews  
Suite America  
Sullivan's Steakhouse  
Swedish Covenant Medical Group  
Synchrony Financial  
Target, Peterson Ave  
Tejas Yoga  
Temperance Beer Co.  
The Angel Team  
The Blackstone Hotel  
The Chicago Diner  
The Children's School of Oak Park  
The Club at Strawberry Creek

The Field Museum of Natural History  
 The Godfrey Hotel Chicago  
 The Habitat Company  
 The Harbor Grand Hotel  
 The House Theatre of Chicago  
 The Kids' Table  
 The Market House Restaurant  
 The Peninsula Chicago  
 The PGA of America  
 The Right Move Group  
 The Security Traders Association of Chicago/George Martin  
 The Spice House  
 The Talbott Hotel  
 The Volunteer Center of New Trier Township  
 The Wheelhouse Hotel  
 The Whitehall Hotel, Fornetto Mei Restaurant  
 The Wine Goddess  
 Timeless Toys  
 TimeLine Theatre Company  
 Toho Technology Inc.  
 Tony Odisho  
 Trader Joe's  
 Transfer Pizzeria Cafe  
 Trattoria Demi  
 True Value Company  
 Twin Anchors Restaurant & Tavern  
 Two Brothers Brewing Company  
 U.S. Cellular  
 Uncommon Ground  
 United in Faith Girl Scouts, Chicago

Urban Bicycle Food Ministry Chicago  
 USY International Convention  
 Vaughn Occupational High School  
 Victory Gardens Theater  
 Vin Chicago  
 Vistex, Inc.  
 Vivettes  
 W Hotels of Chicago  
 West Leyden High School  
 Service Club  
 West School, Glencoe  
 Whitney Young High School  
 Wildwood IB Elementary School  
 Willow Room  
 Winnetka Community House & Winnetka Youth Organization  
 Winston & Strawn LLP  
 Wisdom Oral Care, LTD  
 Wolfbait & B-girls  
 WTTW  
 Wyzant  
 Yello  
 Zanies Comedy Clubs, Inc.

### Individuals

Anonymous (12)  
 Gordon & Paula Addington  
 Randy & Maria Altmayer  
 Cameron Lee Andersen  
 Cathryn Anderson  
 Maggie Antonijevic  
 Jen & Bennett Applegate  
 Mary Arlandson  
 Tamra Armour

Martin Atayan  
 Stephanie Atella  
 Doris Ayres & Les Teichner  
 Sara Barrett  
 William T. Barry  
 James Batteast  
 Anthony Becknek  
 Elizabeth Beller  
 David & Nicole Berger  
 Karen Bessonny  
 Carolyn Binder  
 Beth & Gary Birnbaum  
 Maureen Blaha  
 Sarah Blaszczyk  
 Barbara Bolsen  
 David Borowski  
 Kiantae A. Bowles  
 Shawna Bowman  
 Jessica Bozek  
 Jennifer & Tom Bradley  
 Kelly Brand  
 Wendy Bright  
 Sara Brodzik  
 Elizabeth Brown  
 Heather Burke  
 Susan Burnet  
 Joellen Burshtan  
 Peggy Callahan  
 Mike Camiliere  
 Irene Caminer  
 Phillip Cantor  
 Anthony Carlsen  
 Patti & Chuck Carrington  
 Maureen & Robert Carson  
 Dan Chester  
 Kris Citron  
 Randall M. Clark, Jr.  
 Jill & Charlie Cline  
 Ronald & Carol Cole  
 Colgate Family  
 Brad Collins  
 Colin Colson  
 Merle R. Cooper  
 Marti Corcoran  
 Rita Cox  
 Camille Cozzini  
 Kristi Dahm & Brian Herman  
 Janice & Rick Daitchman  
 Tom & Julie Danilek  
 Sanjna Das

Kim & Nic Dasovich  
 Pamela Davis & Tyler Clark  
 Sondra de Jong  
 William De Luca  
 Judy Dean  
 Diane Decraene  
 Rebecca Delahaye  
 Cynthia Diaz  
 Elizabeth Dischner  
 Margaret Dolan  
 Jean C. Dorsch  
 Daniel Dubin  
 Nancy Dunleavy  
 Eileen Durkin  
 Ginny Durkin  
 Marianne Bordeaux Eberhardt  
 Ben Epstein  
 The Epstein Family  
 Tracy & Jeff Farley  
 Kathy Fauth  
 Mary Faux  
 Brian & Kathy Fergemann  
 Terry & Barbara Ferrari  
 Cynthia M. Flores  
 Kate A. Foley  
 Kim France  
 Barry Frank  
 Jean Friedman  
 David Furlin  
 Glenn Gallo  
 Ilse Garcia  
 Renee Gatsis  
 The Ginn & Loun Family  
 Margaret M. Glaser  
 Neal Goby  
 Bart Goldberg  
 Anne & Bill Goldstein  
 Gordon Food Service  
 Desiree A. Grant  
 Judy & Samuel Greenberg  
 Alan & Carol Greene  
 Jesse Greene  
 Khamishah Griffin  
 Sandi Gustafson  
 Catherine A. Gustaitis  
 Kathleen Gutnayer  
 Craig Hahn  
 Michele Hakimian  
 James & Donna Hamann  
 Lori & Mark Hamann

Patricia Hamann  
 Paul W. Hamann  
 Rita M. Hamann  
 Kathryn Hansen  
 Thomas Hanson  
 Tony Hecimovic  
 Rachel Hermes  
 Marilyn Hernandez  
 Donna Hippensteel  
 Anne & Tracy Hoffman  
 Laine Hoffman  
 Lila Hofmann  
 Carol A. Hogan  
 Mary & Jeff Holdsberg  
 Jyl Holland  
 Steffany Holloway  
 Deniece Hopkins  
 Suzanne J. Hoyes  
 Amy Hughes  
 Tabitha Humphries  
 John C. Hynes  
 Catherine Nwileh Ibeagha  
 Kristin Jaburek  
 Rita & Robert Janco  
 Norman Jeddeloh  
 Kathy Johnson  
 Qiana Johnson  
 Mr. & Mrs. Gregory Kaczmarek  
 Nicole Keesecker  
 William Kennedy  
 Mr. & Mrs. John A. Kinahan  
 David King  
 James & Ozana King  
 Constandina Kiosse  
 Margaret & Thomas Kloempken  
 Bethany Ko  
 Julie Kosarin  
 Sheila Kowalski  
 Melinda Kramer  
 Mary Rita Kropp  
 Krista M. Kutz & Craig Scanlon  
 Ginny & Joe Kuzniar  
 Karyn Lapping  
 Sarah Lawrence  
 Sharon Lawson & David Mangian  
 Alexandra LeBlanc  
 Ricky & Marie LeFlore  
 Tom Lembeck & Natasha Motev  
 Laura Levan  
 Theo J. Schloff Lewis



Kim & Jim Lifton  
Mary Lindsay  
Jane D. Lippow  
Pam Lojewski  
Nora N. Lopez  
James Lumberg  
Mary Lynch & Geof Brown  
Carol & Ben Mackoff  
Janet Mahany  
Jeremy W. Majors  
Dan Maloney & Rick Sherwood  
Megan Marly  
Lori A. Martin  
Peter & Marcia Masloski  
Colleen & Scott McCarter  
Scott McClung  
Bridget McDonnell  
Kevin McKeough  
Geri & Ed McKeown  
McMahon Family  
Sally McNamara  
David & Patti Melzer  
Pauline M. Mertes  
William D. Meser  
David Meyers  
Sandra Middleton  
Harriet Minkin  
Catherine & Leo Miserendino  
Vanessa Moreno  
Tim & Melinda Morgan  
Amanda Morris & Mark Rentfro  
Gabe Munoz  
Eden Newmark  
Amanda Niro  
Patricia M. Nordahl  
James Nunn  
Dorothy Oakley  
Gretchen Oehlschlager  
Margaret A. Oliver  
David Ortman  
Rose Palframan  
Melanie M. Park  
Pat Parks  
Mary Paschen  
Ashok C. Patel  
Alexandra Paul  
Barbara & Robert P. Perkaus, Jr.  
Betsy & Mike Peska  
Erin Peska & Ben Scarbalis  
Tedd Peso

David & Kimberly Peterson  
Bincy & Jincy Philip  
Mr. & Mrs. Phillips  
Lisa Ploetz  
Alicia & Peter Pond  
Robin Powers  
Elizabeth Pratt  
Katherine Prizy  
Kelly Rafferty  
Sarah Rasher  
Daniel R. Raudonis  
Mary Hutchings Reed &  
Dr. William R. Reed  
Heather L. Reid  
Jessecia Rhymes  
Chuck & Cathy Ripp  
Susan Roach  
Robin & Peter Roberts  
Emily Romasante  
Ellen Romberg  
Marlen Rosales  
Sally Ann Rose  
Jono & Piper Rothschild  
Lisa Rouff  
Jill & Allan Ruter  
Nazanin Saidi  
David A. Saunders  
Ruth A. Savolaine  
Cassie Schaeffer  
Andrew Schorr & Cory Fransway  
Leslie Schroeder  
Jodi L. Schubert  
Carol & Stuart Schweidel  
Miriam Basch Scott  
Mary Sebahar & William Clary  
Donald Sheber &  
David Wywialowski  
Darby Shelby  
Allie Sider  
Josh Siegel  
The Sierzega Family  
Debbie & Bernie Simon  
Polly & Rodney Sippy  
Michael Slater &  
Shoshana Waskow  
Holly Smirl  
Valerie K. Smith  
Caitlin Sobotka  
Peter Sorel  
Alyssa Soren

Krista Sprungman  
Amalia Stachowiak  
Margaret Stoltz  
Katie Suib/Strength in Numbers  
Olivia Sulita  
Colleen Sullivan & Max Nutkowitz  
Diane & Richard Suwanski  
Sheila & Roy Swillum  
Tan Family  
Joani Tarsitano, DDS  
Brennan Taylor  
Sean Taylor & Sian Sutcliffe  
Mary Tellis-Nayak  
Robin Terry  
Steve Therry  
William Thompson  
Dennis W. Thorn  
Andrew Thorrens & Don Mizerk  
Barbara Tokar  
Eloy J. Trevino  
George & Laurel Trimarco  
Dan Ushman  
Mary Valley & Gus Wilhelmy  
Anuradha Verma  
Alexa Vetos  
Collin Voigt  
Michael & Beverly Walther  
Rachel Warach  
Mark Warren  
Pamela & David Waud  
Shairn Weeks  
Shira Wein  
Kimyada Wellington  
Aileen Westover  
Charlotte Whitley & Lee Lohman  
Ellen Wiggins  
Carrie Willcutt  
Cass & Sam Williamson  
Joann & David Winston  
Robert Winter  
Dawn Witek  
Becky Wolff  
Chirag Yagnik  
Steve & Melinda Yoo  
Guy Zakrzewski  
Mark Zancanaro  
The Zann Family  
Mary Zima

## THE LEGACY SOCIETY

*Recognizes individuals and couples who have included The Night Ministry in their will.*

*Anonymous (2)*  
Paula & Gordon Addington  
Geoffrey A. Anderson  
*Alma Baker*  
Lorraine and Randy Barba  
*Norma Z. Bennett*  
*Mary Lou Bischmann*  
Barbara Bolsen  
*W. Austin Boynton*  
*James H. Clark*  
Sharon Cole  
*Rosemary H. Collier*  
Marlene Denz  
Ronald F. Duda  
*William A. Dumbleton*  
Rosemary Duvall  
Melanie D. Ehrhart  
Tina M. Erickson &  
Mike Krutsch  
*Lucy F. Fairbank*  
Fred & Sarah Flosi  
*Edna L. Gaul*  
*Morton Goldsmith &*  
*Naomi Lupka*  
*J. Moritz Grolimund*  
*R. Duncan &*  
*Virginia Henderson*  
Edie & Mark Hickman

Ike P. Hong  
Sharon M. Johnson  
*Margaret Kling*  
Laura H. Kracke  
James F. Lacy  
Anna Lee  
*Grace P. MacKay*  
*Cathryn Mann*  
*Marian F. Meier*  
*Carol B. Michael*  
*Mary Jane Mickey*  
*Max C. Mielecki*  
*Robert C. O'Brien*  
*Martha M. O'Leary*  
Richard S. Penner  
*Albert A. Pristave*  
Sitha L. Pugh  
JoAnn M. Rapp  
Lois H. Robinson  
*Lora Sanberg*  
*Harriet E. Schmalzer*  
*Audrey Spiegel*  
Lee Strouse  
*Ora Mae Turner*  
Susan & William Vanderberg  
*James Anderson Volkmar*  
*Patricia E. Wilson*  
Anna Jean Woroch

*Italicized donors are deceased. With heartfelt gratitude, we remember their generous support.*







**THE NIGHT  
MINISTRY**<sup>®</sup>

4711 N RAVENSWOOD AVE, CHICAGO, IL 60640

[www.thenightministry.org](http://www.thenightministry.org) Phone: 773-784-9000 Fax: 773-784-5865

